



# **High Frequency Macroeconomic Forecasts: Second Quarter 2004**

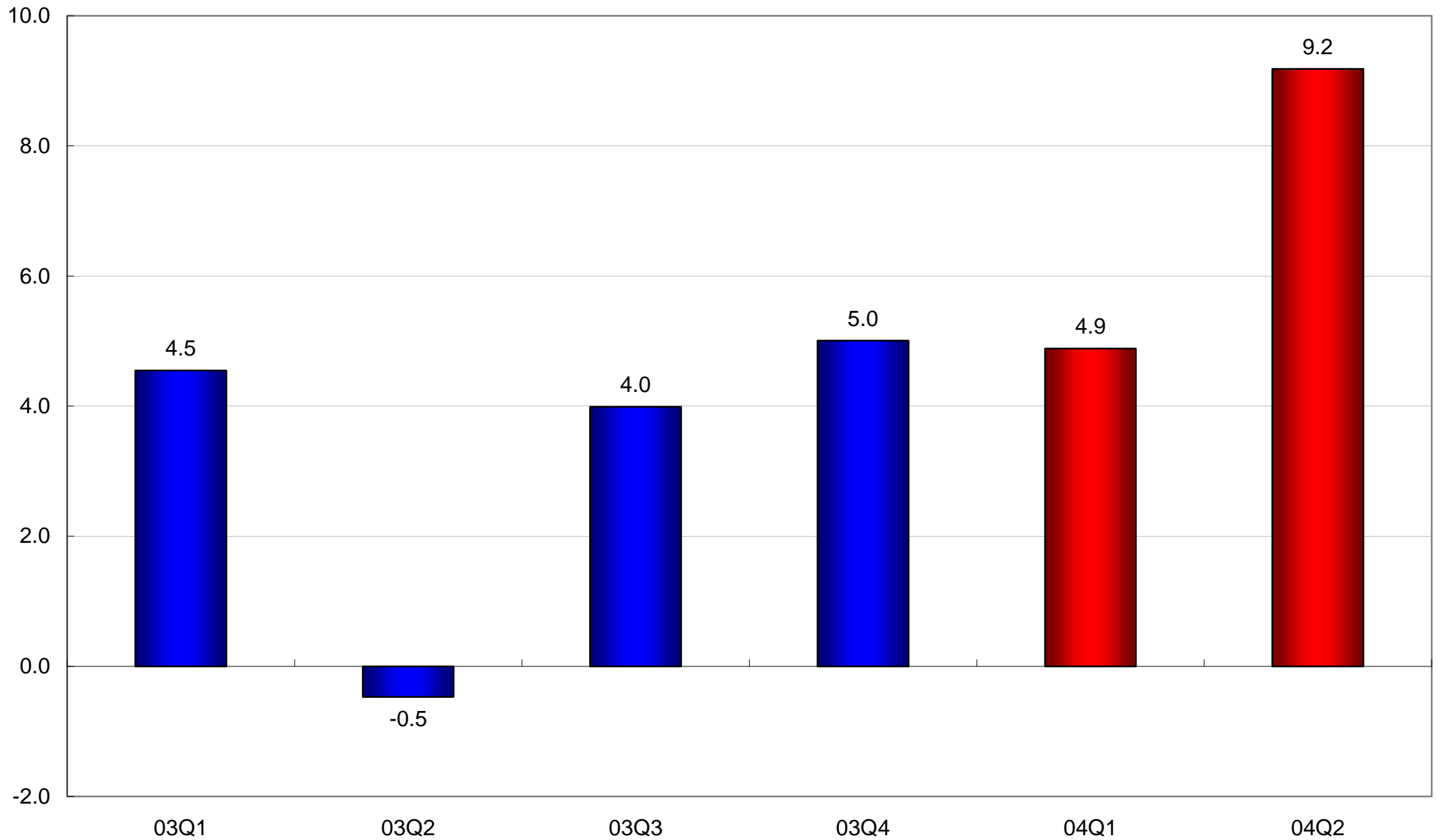
**APEC Study Centre  
The University of Hong Kong**

**April 7<sup>th</sup>, 2004**

**<http://www.hku.hk/apec/cqm/04Q2>**

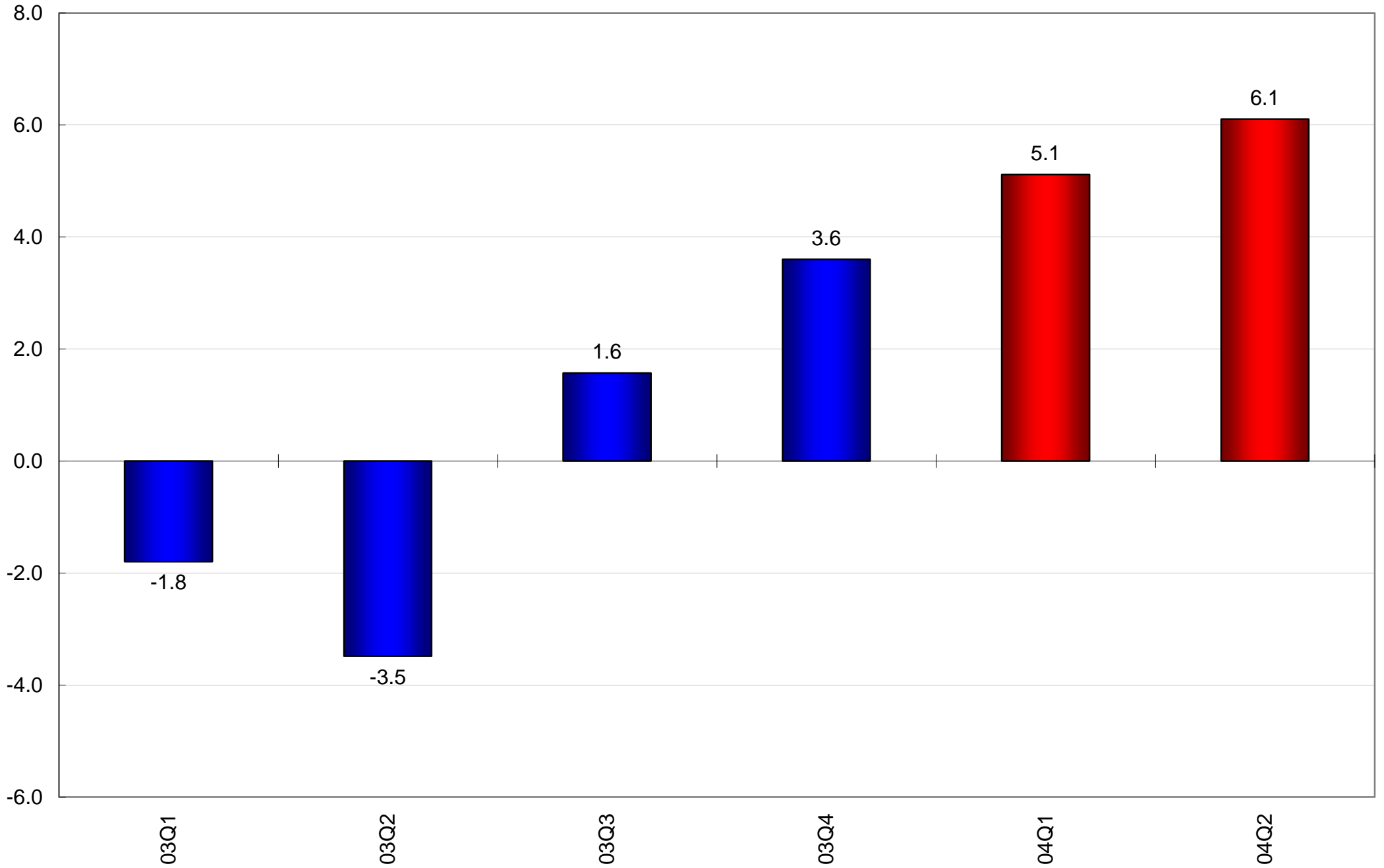
# Gross Domestic Product

(2000 prices, year-on-year percentage change)



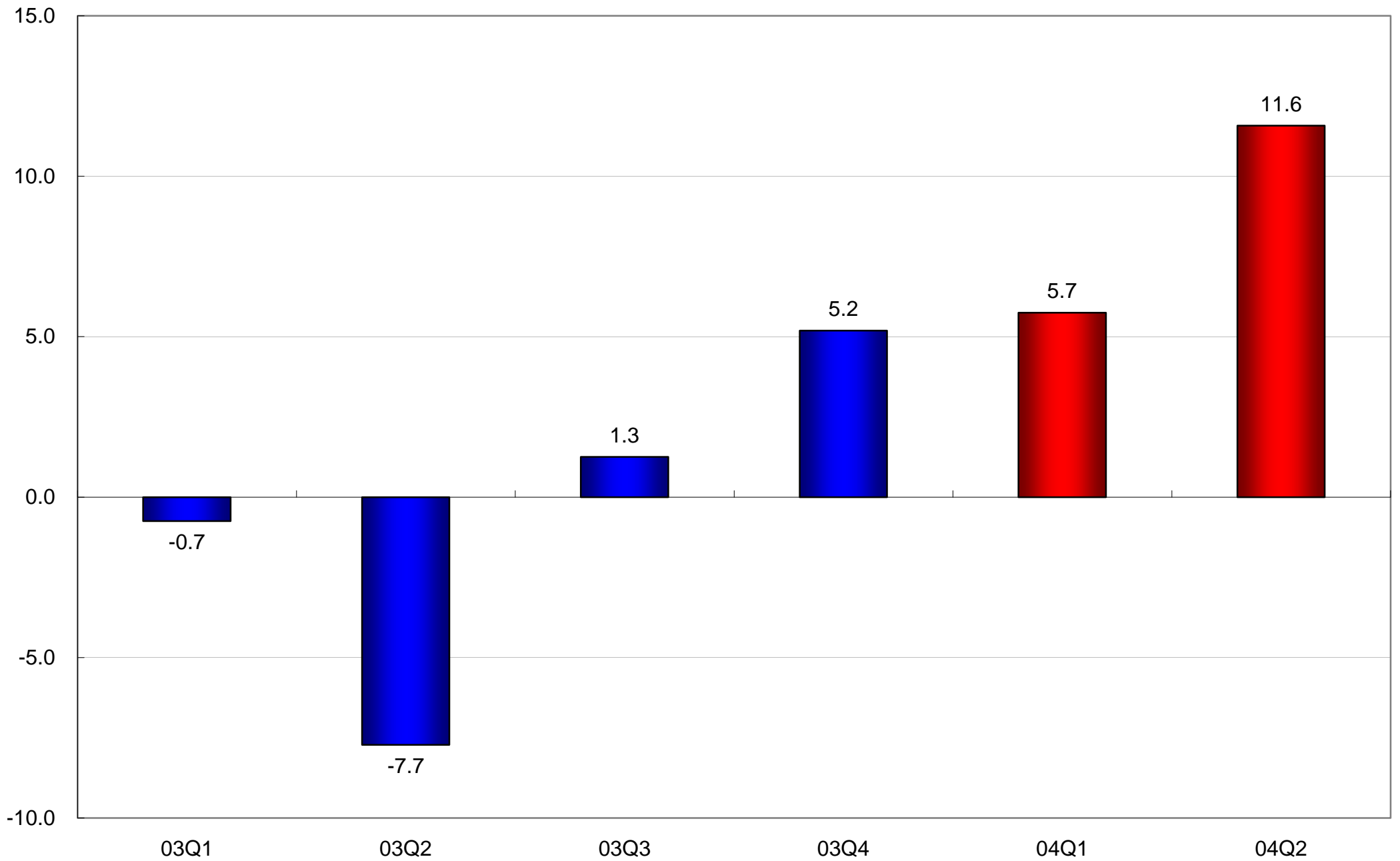
# Private Consumption Expenditure

(2000 prices, year-on-year percentage change)



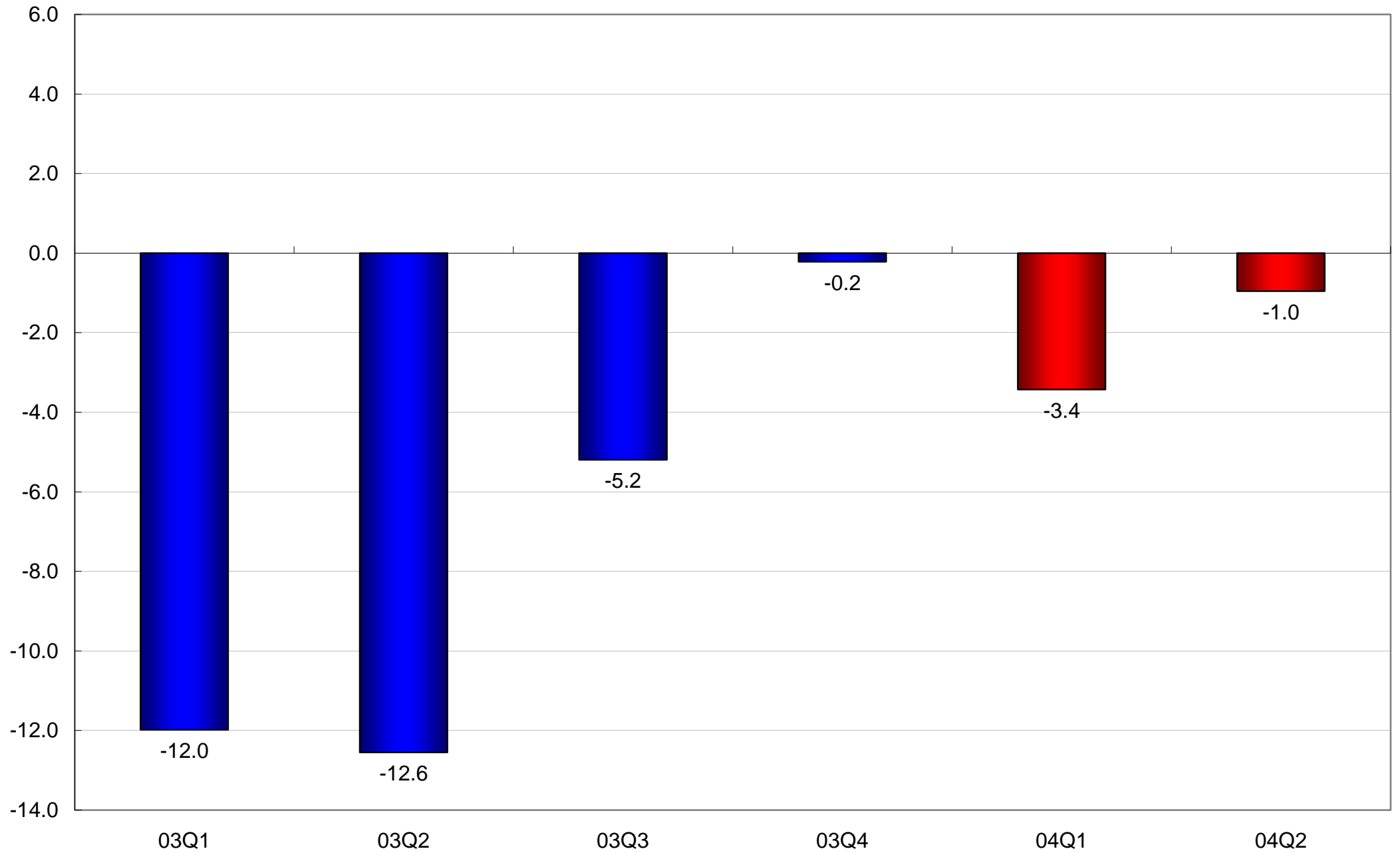
# Retail Sales Volume

(year-on-year percentage change)



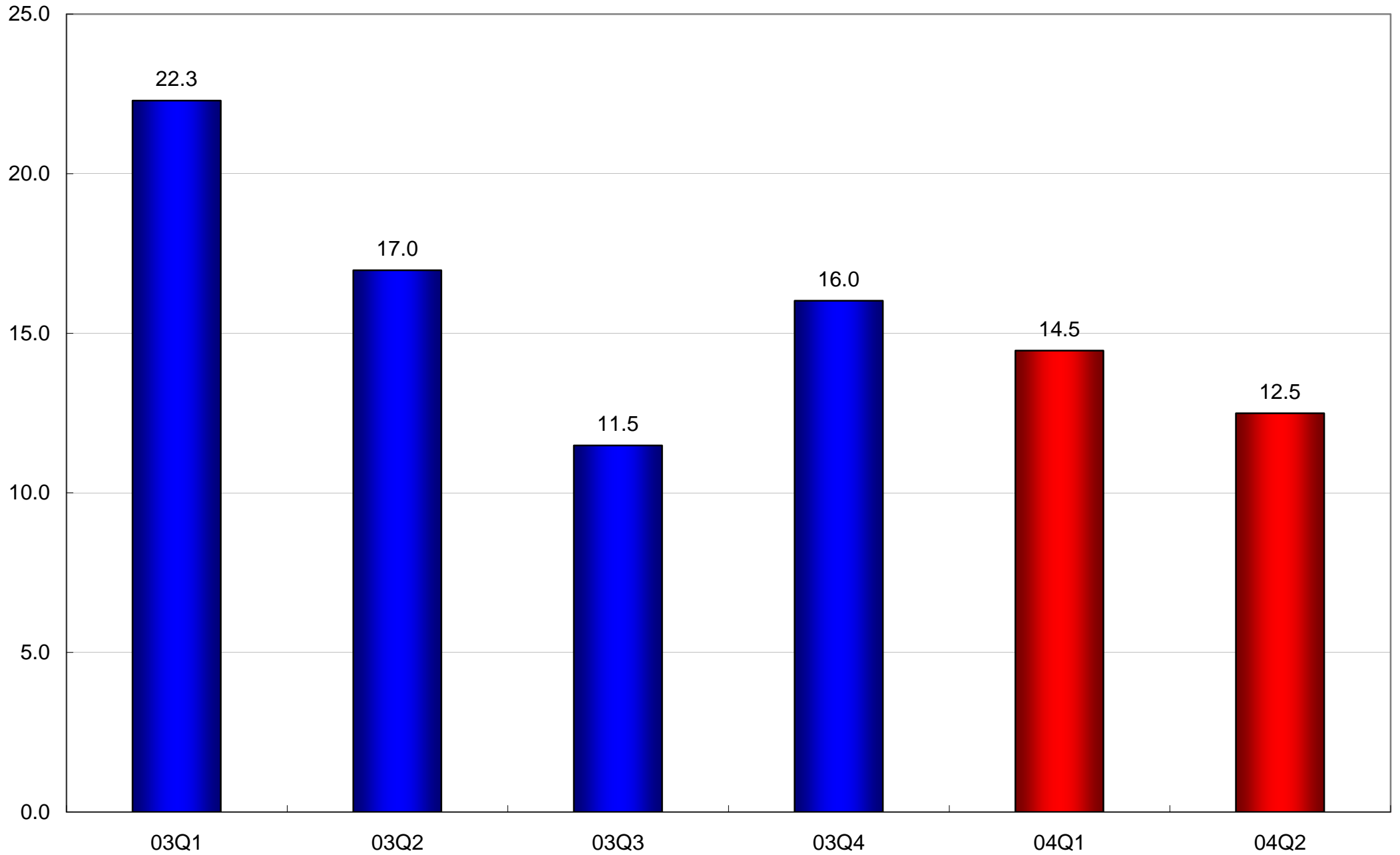
# Domestic Exports of Goods

(2000 prices, year-on-year percentage change)



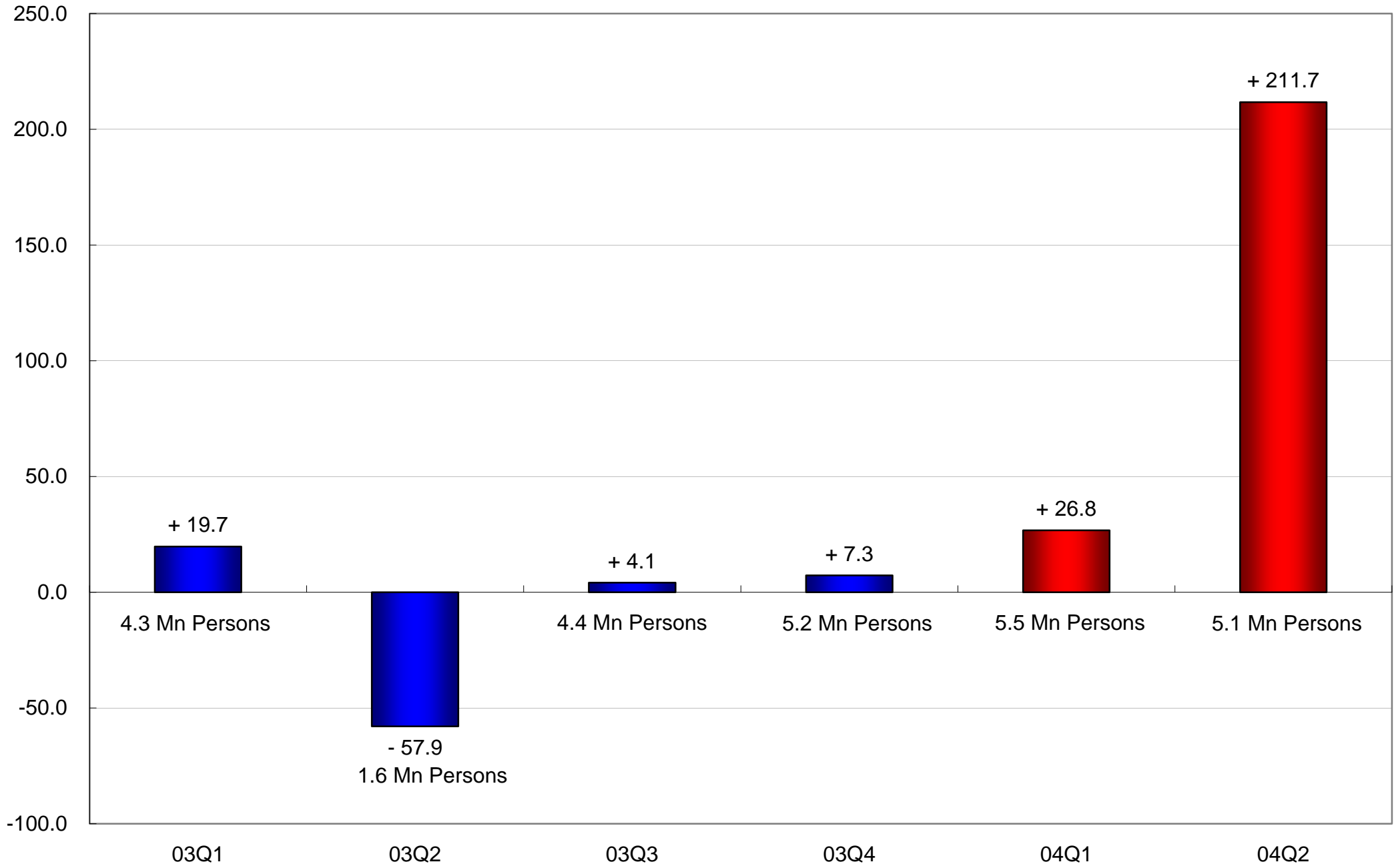
# Re-exports of Goods

(2000 prices, year-on-year percentage change)



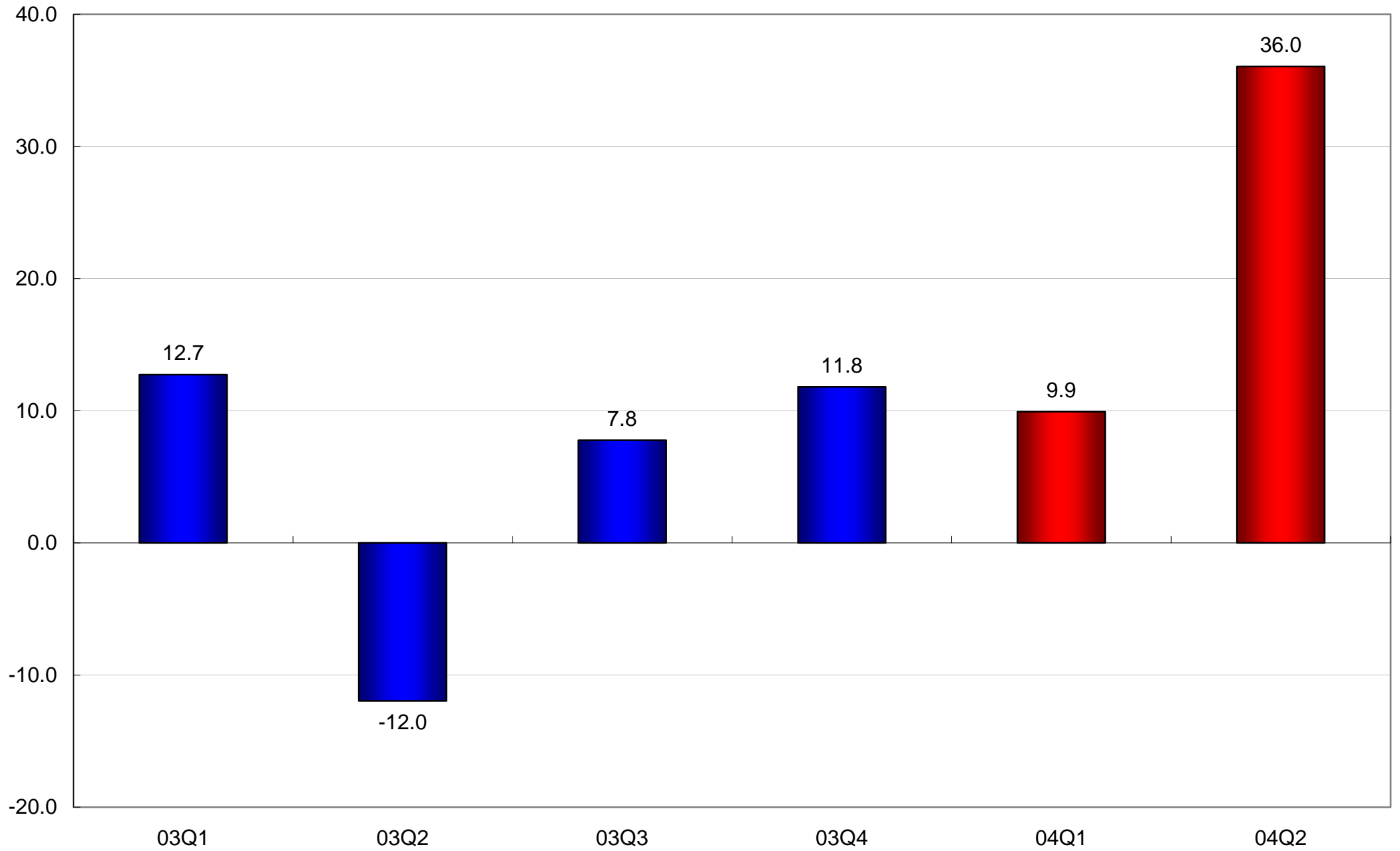
# Visitor Arrivals

(year-on-year percentage change)



# Exports of Services

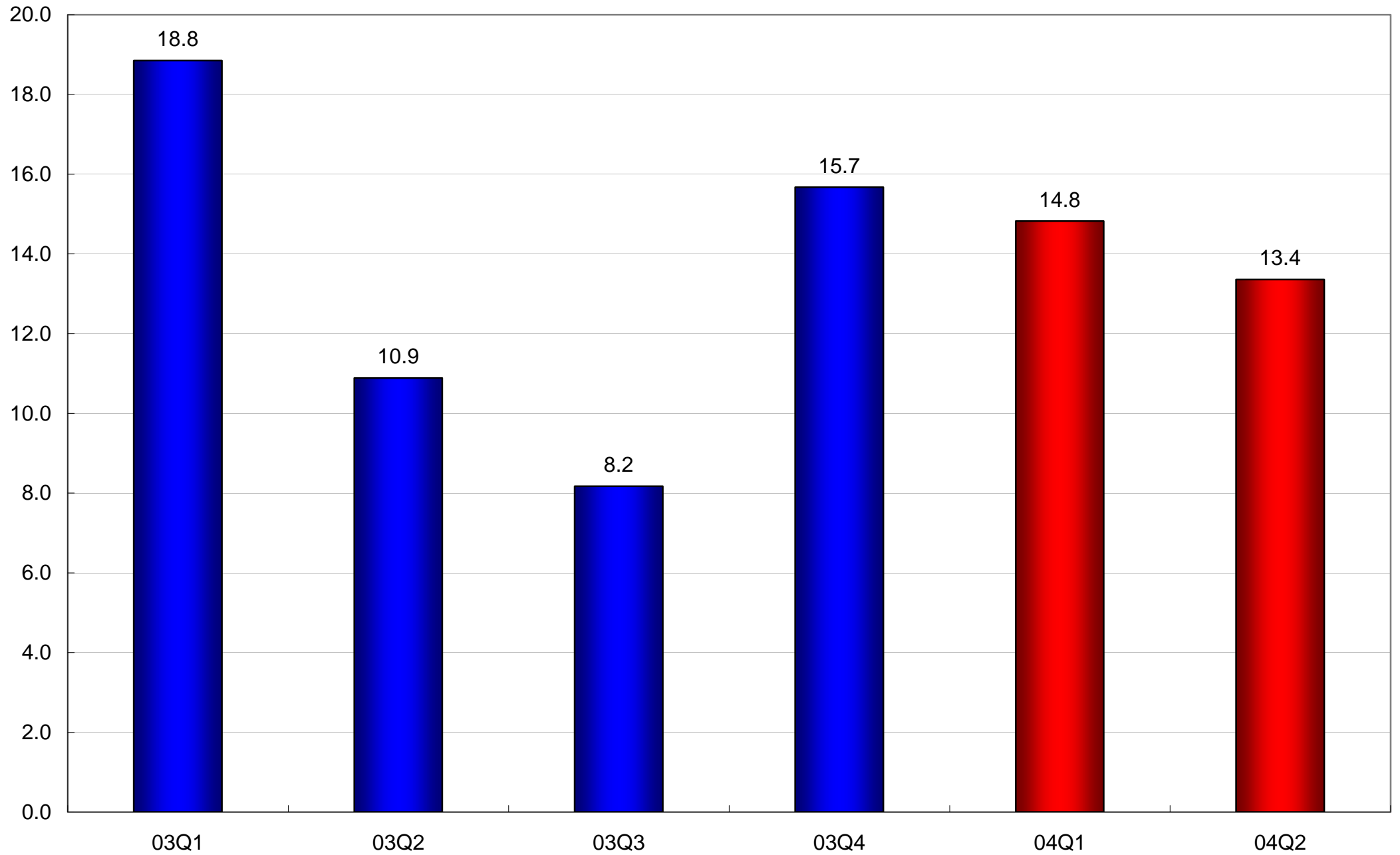
(2000 prices, year-on-year percentage change)





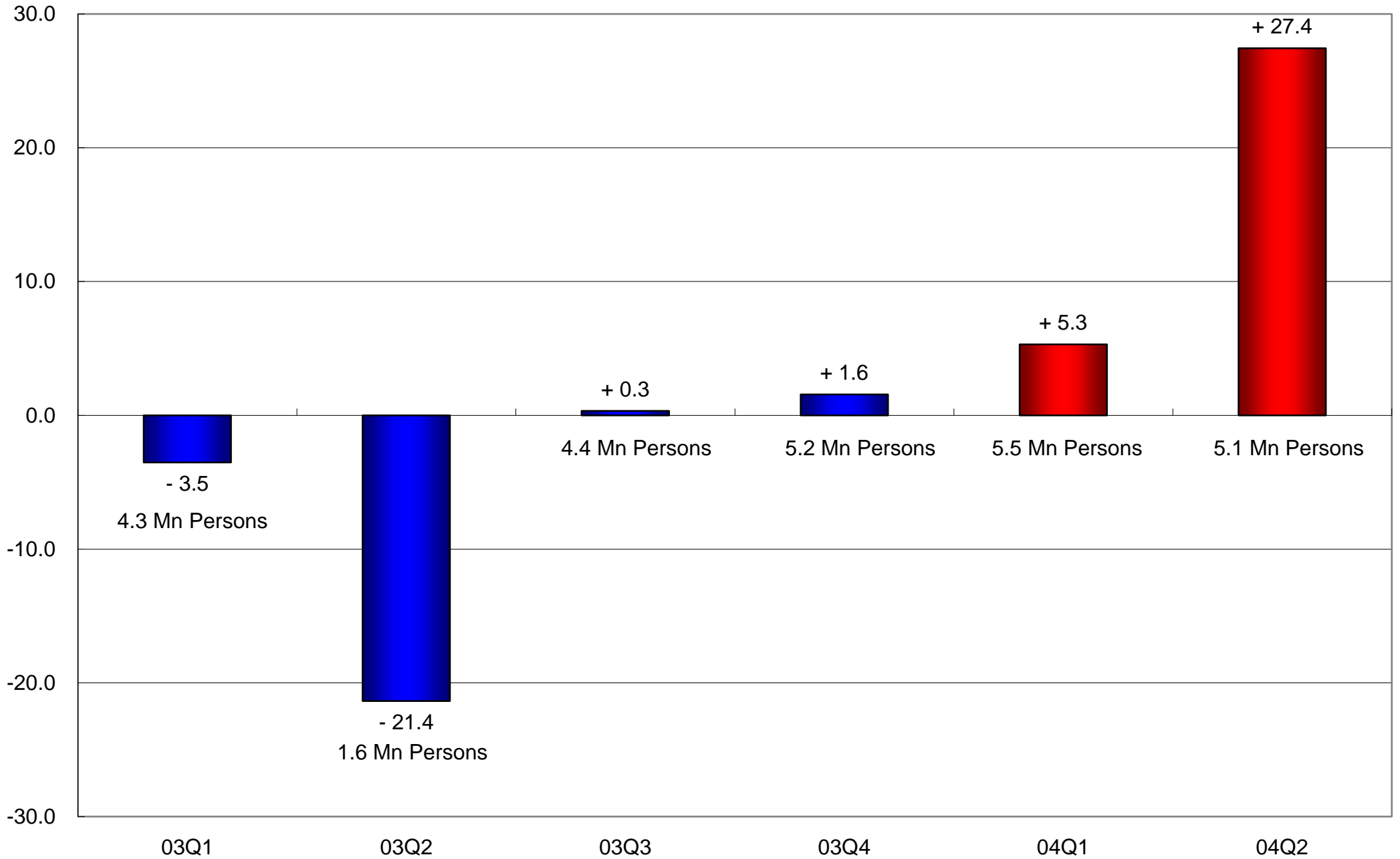
# Imports of Goods

(2000 prices, year-on-year percentage change)



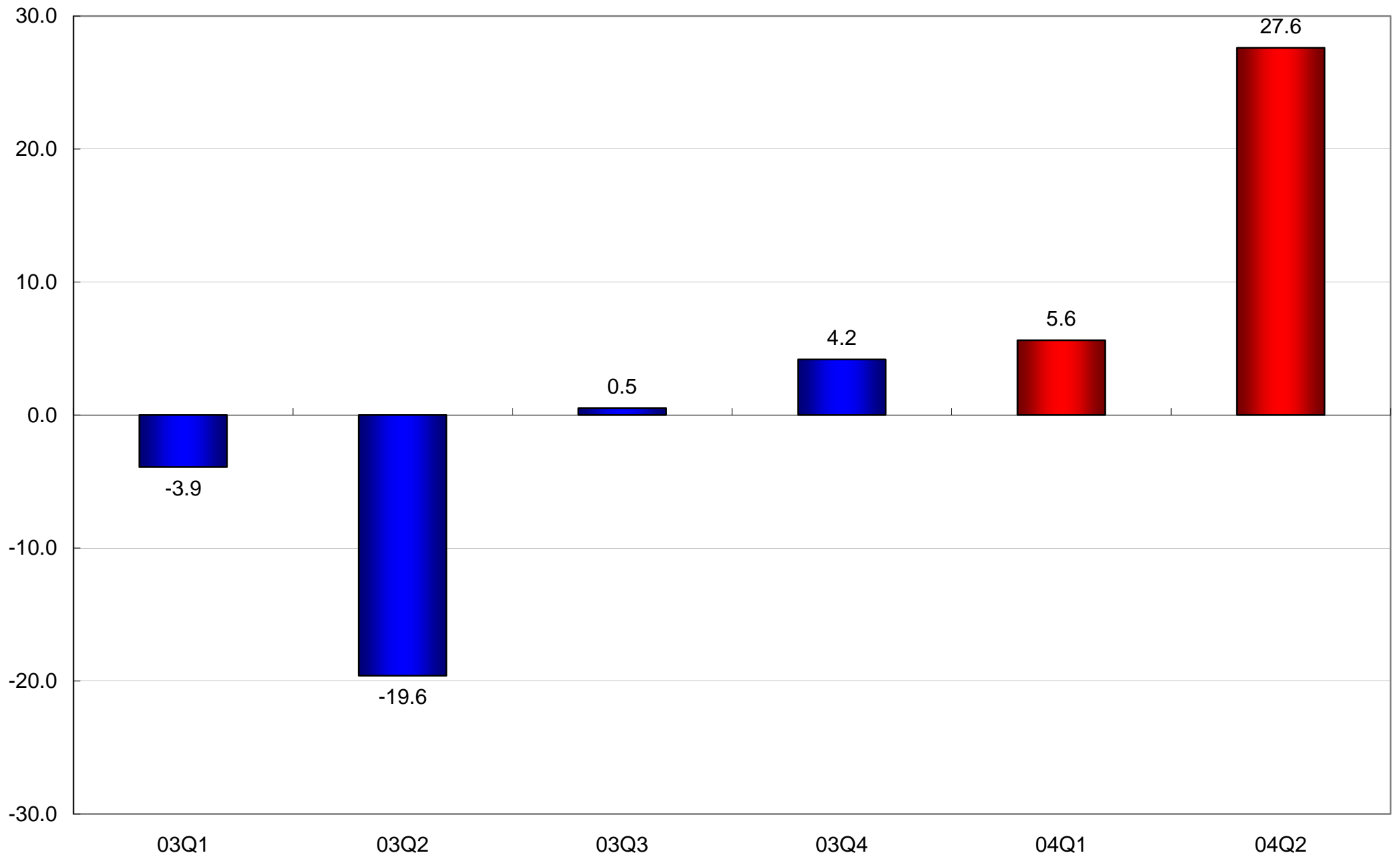
# Resident Departures

(year-on-year percentage change)

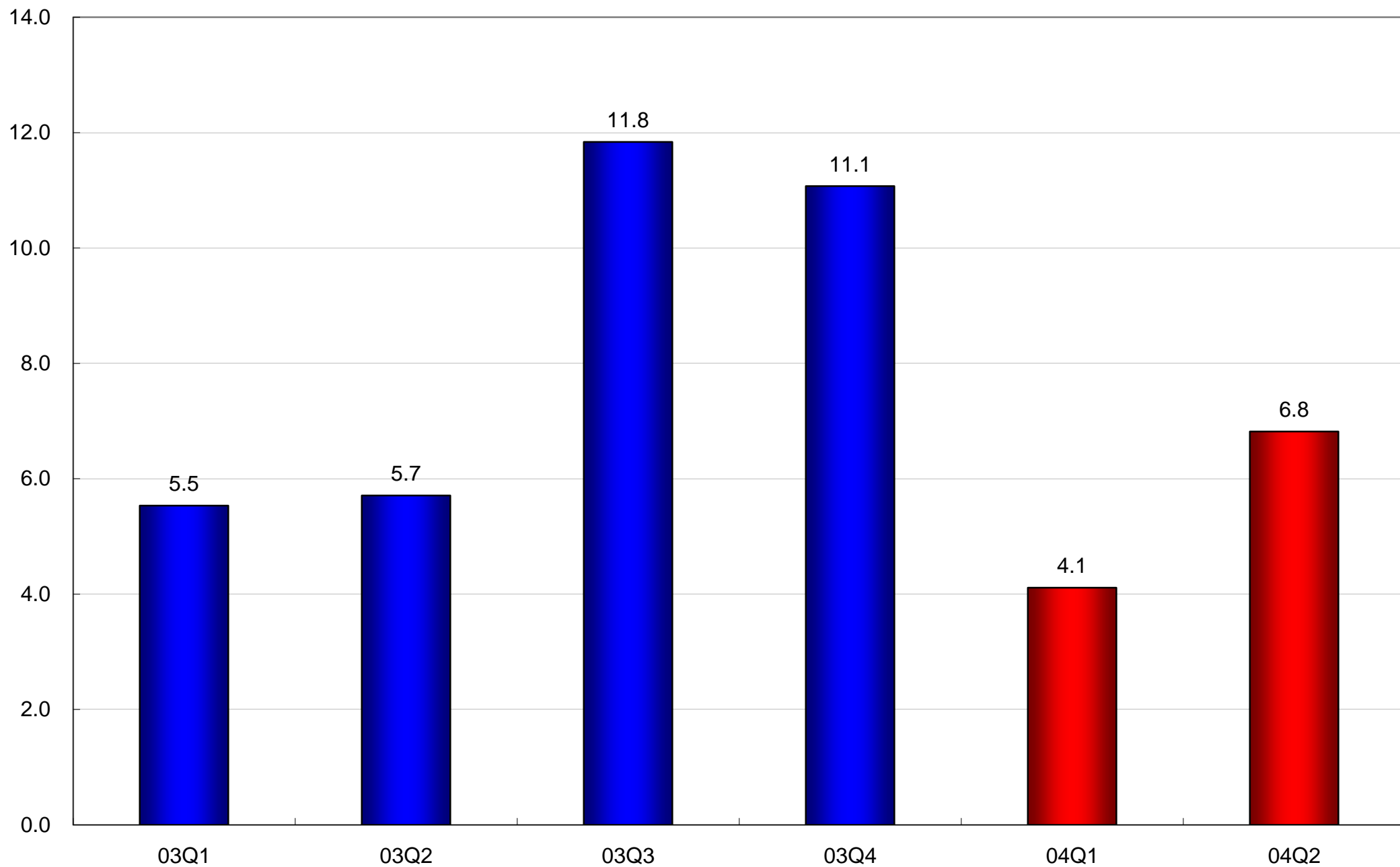


# Imports of Services

(2000 prices, year-on-year percentage change)

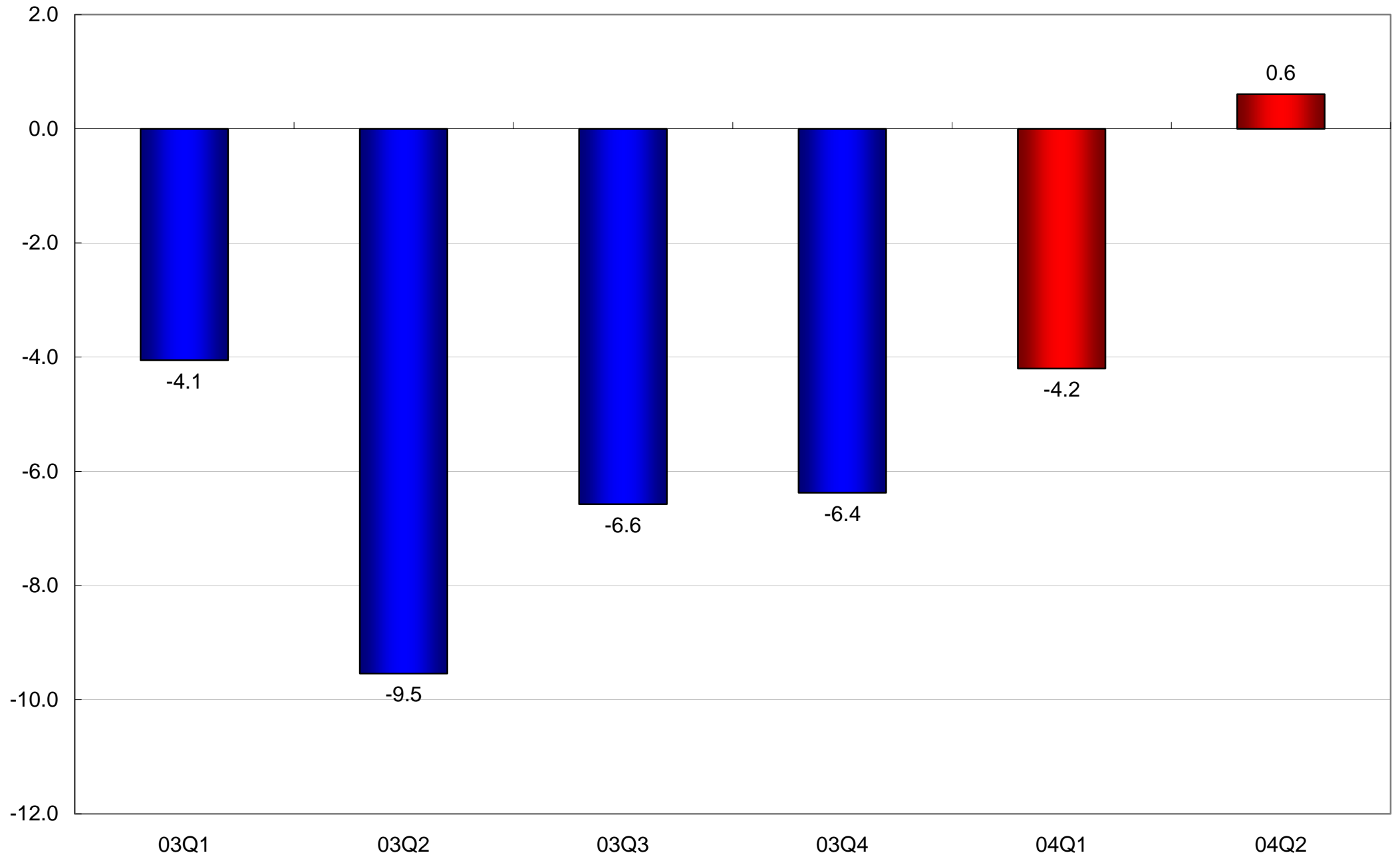


## External Trade Balance of Goods and Services (2000 prices, Percentage of GDP)



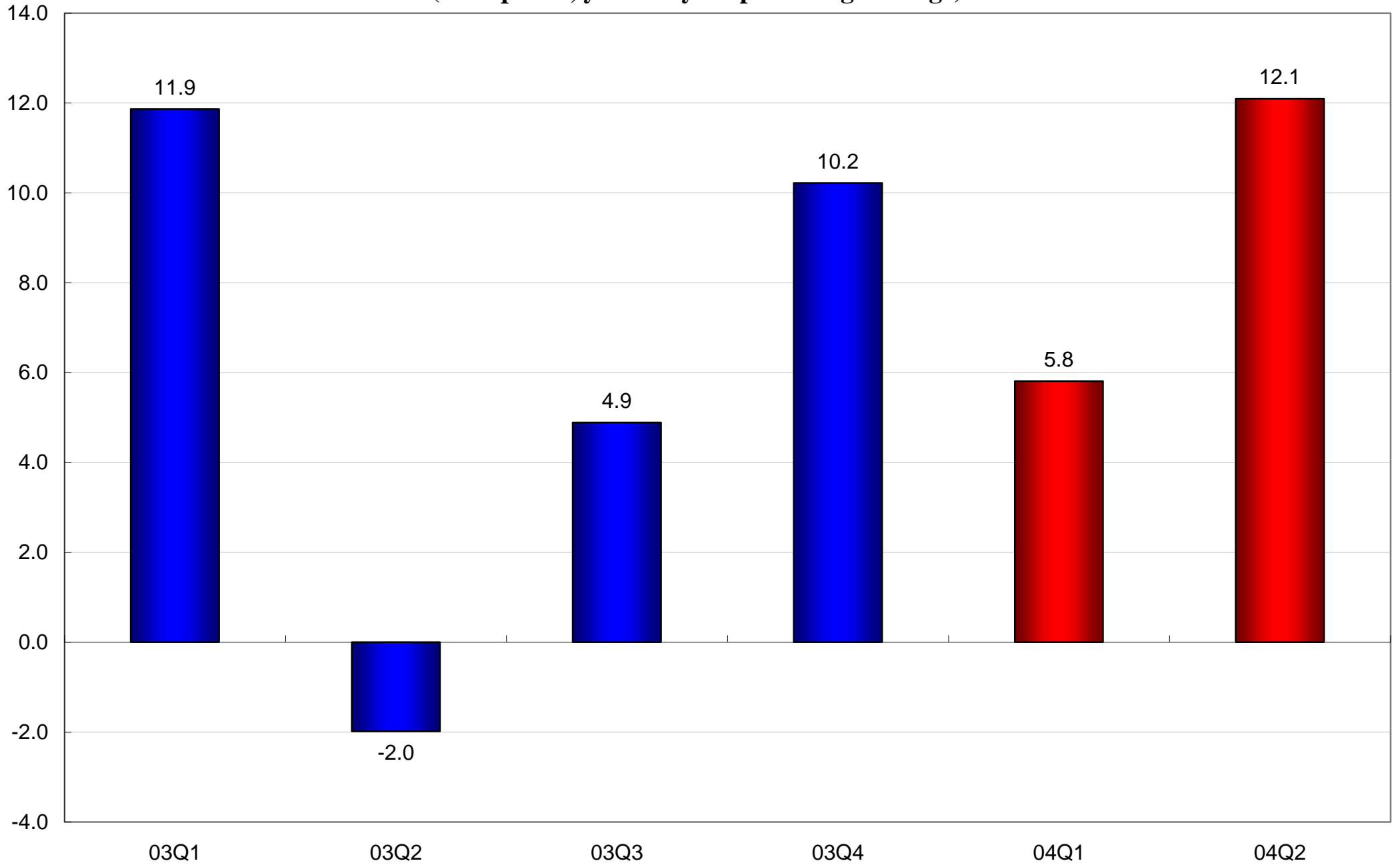
# Investment in Land & Construction

(2000 prices, year-on-year percentage change)



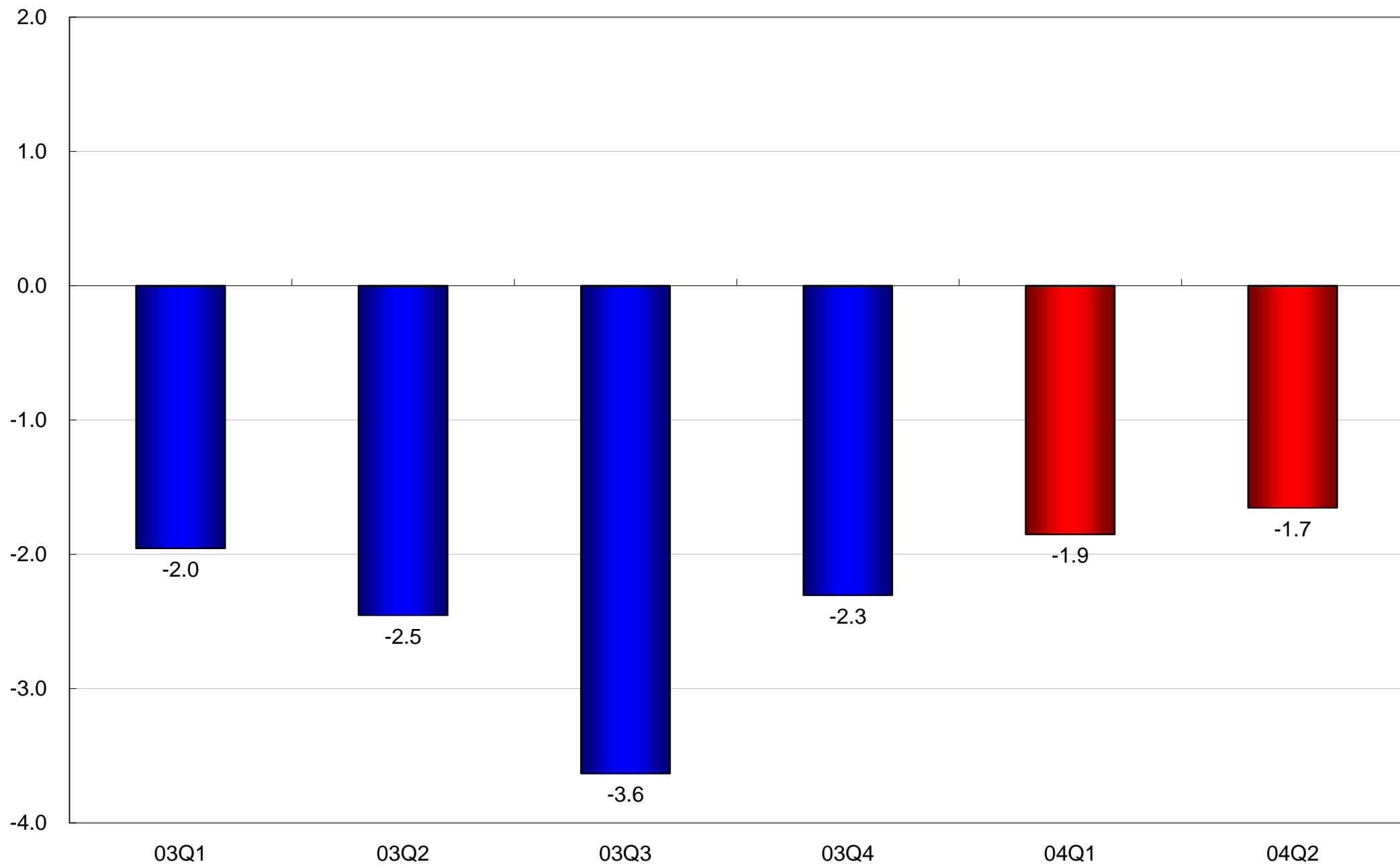
# Investment in Machinery & Equipment

(2000 prices, year-on-year percentage change)

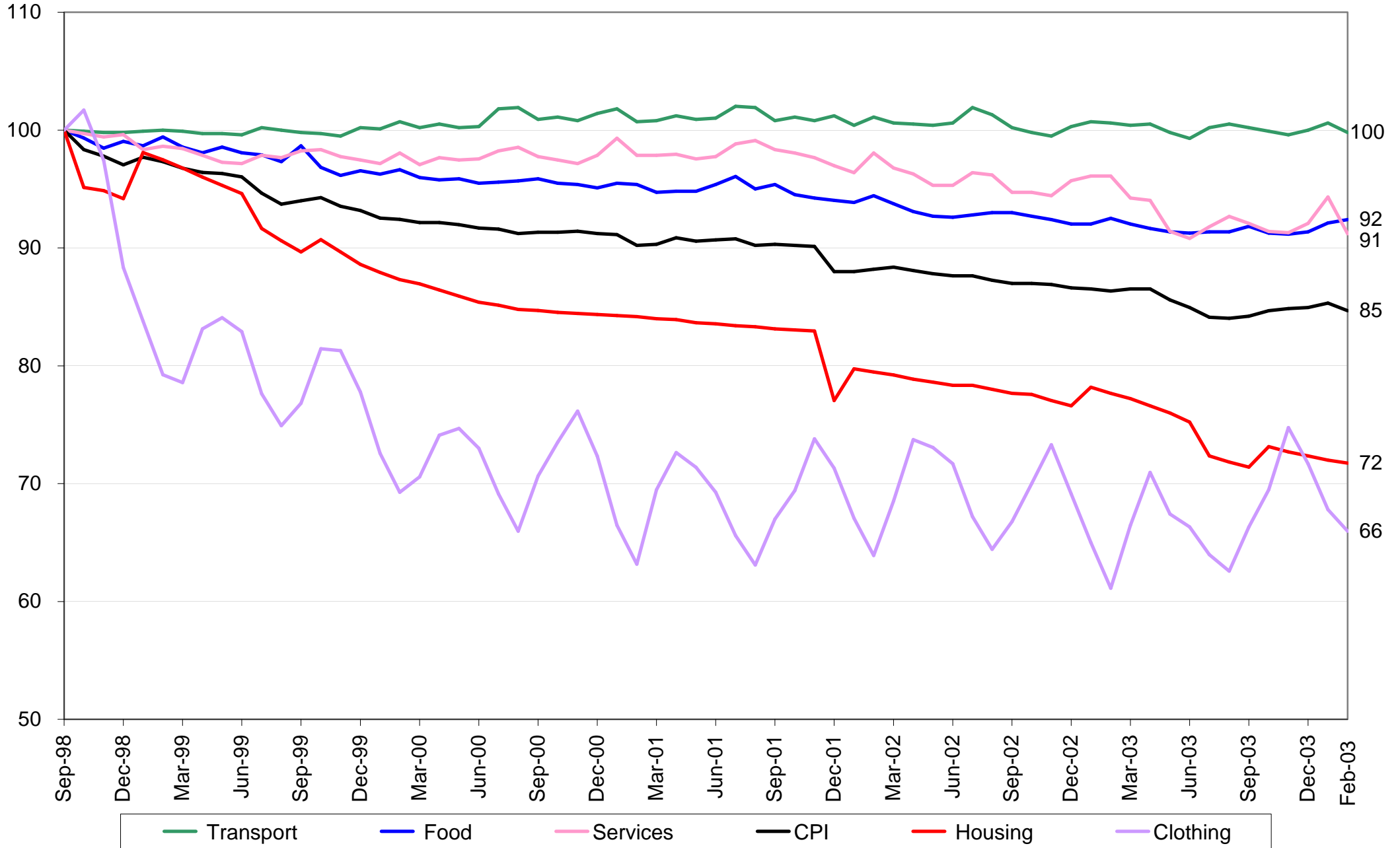


# Consumer Price Index

(Year-on-year percentage change)

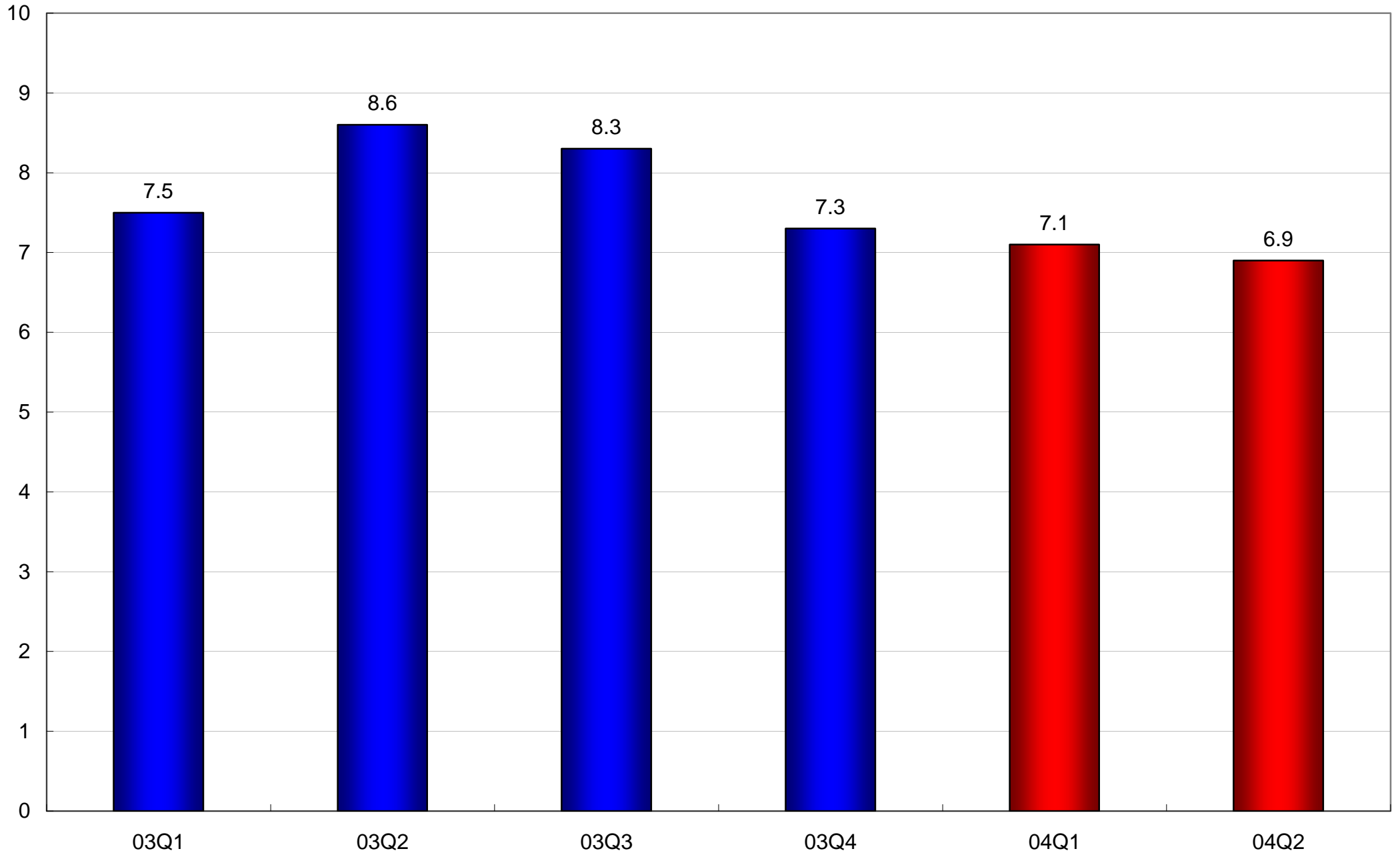


# Composite Consumer Price Index (Sept 1998 = 100)





# Unemployment Rate (Seasonally Adjusted)



# Workers Vs Jobs (in millions)

