



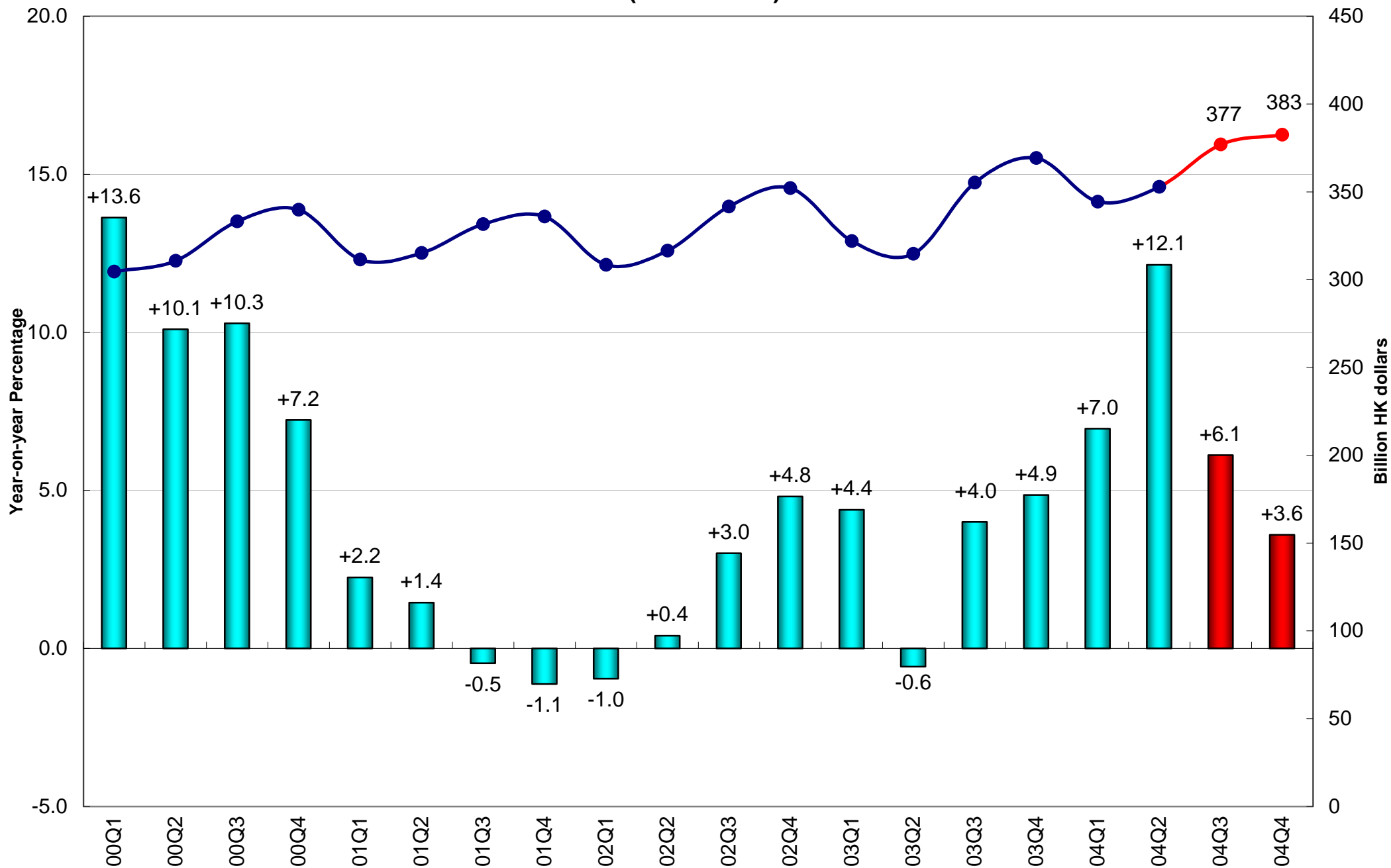
# High Frequency Macroeconomic Forecasts: Fourth Quarter 2004

APEC Study Centre  
The University of Hong Kong

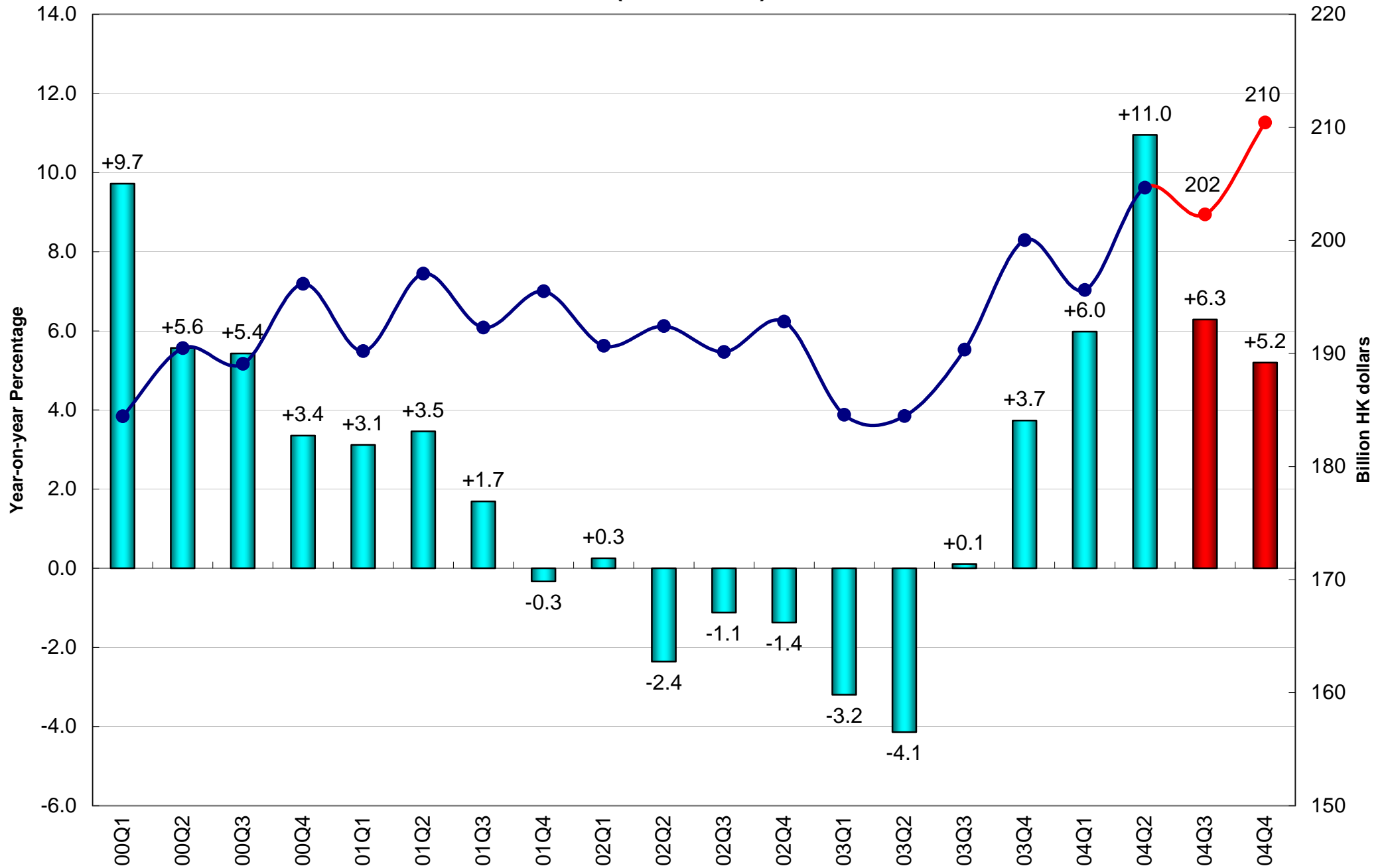
October 6<sup>th</sup>, 2004

<http://www.hku.hk/apec/>

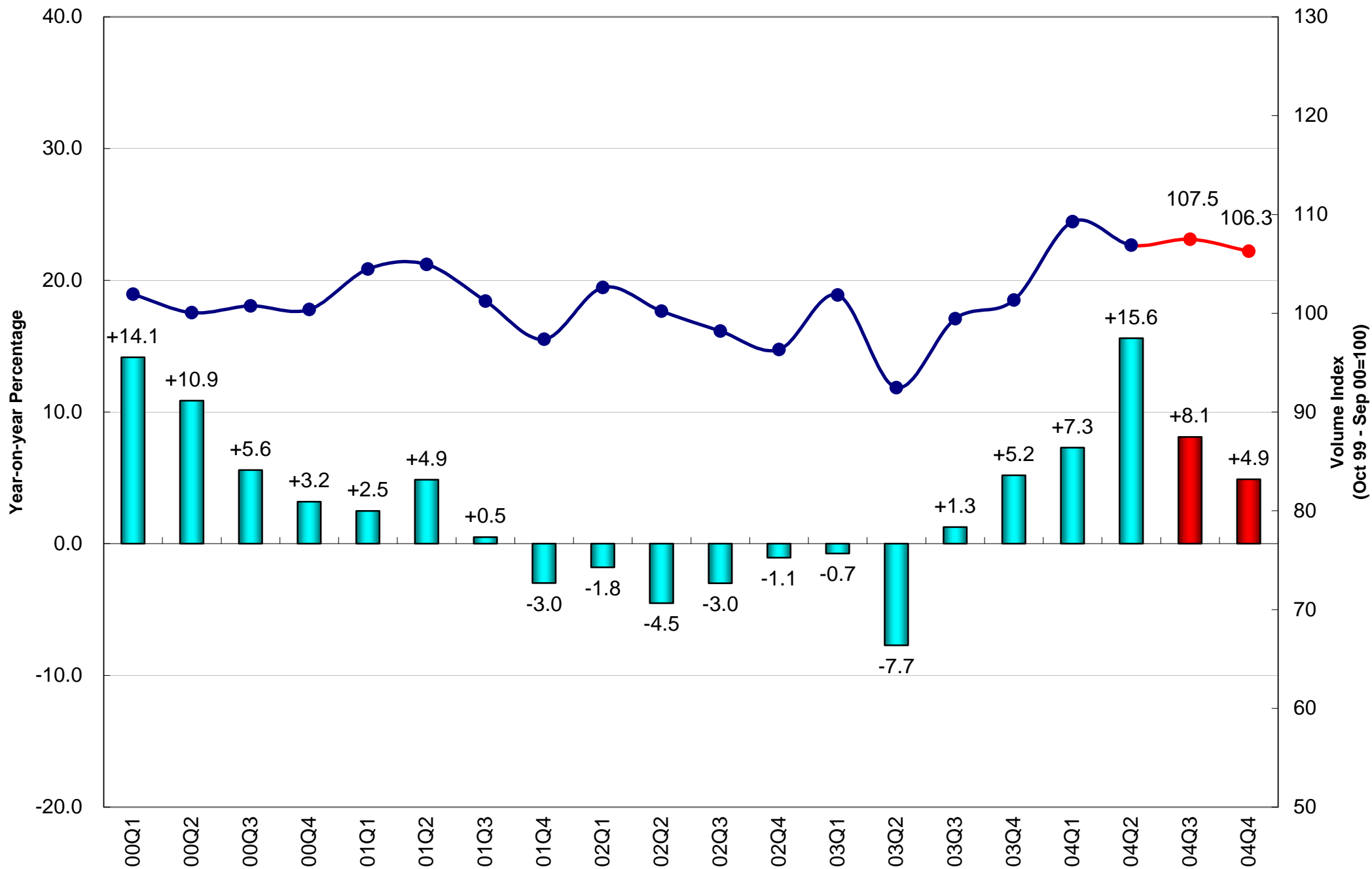
## Real Gross Domestic Product (2000 Prices)



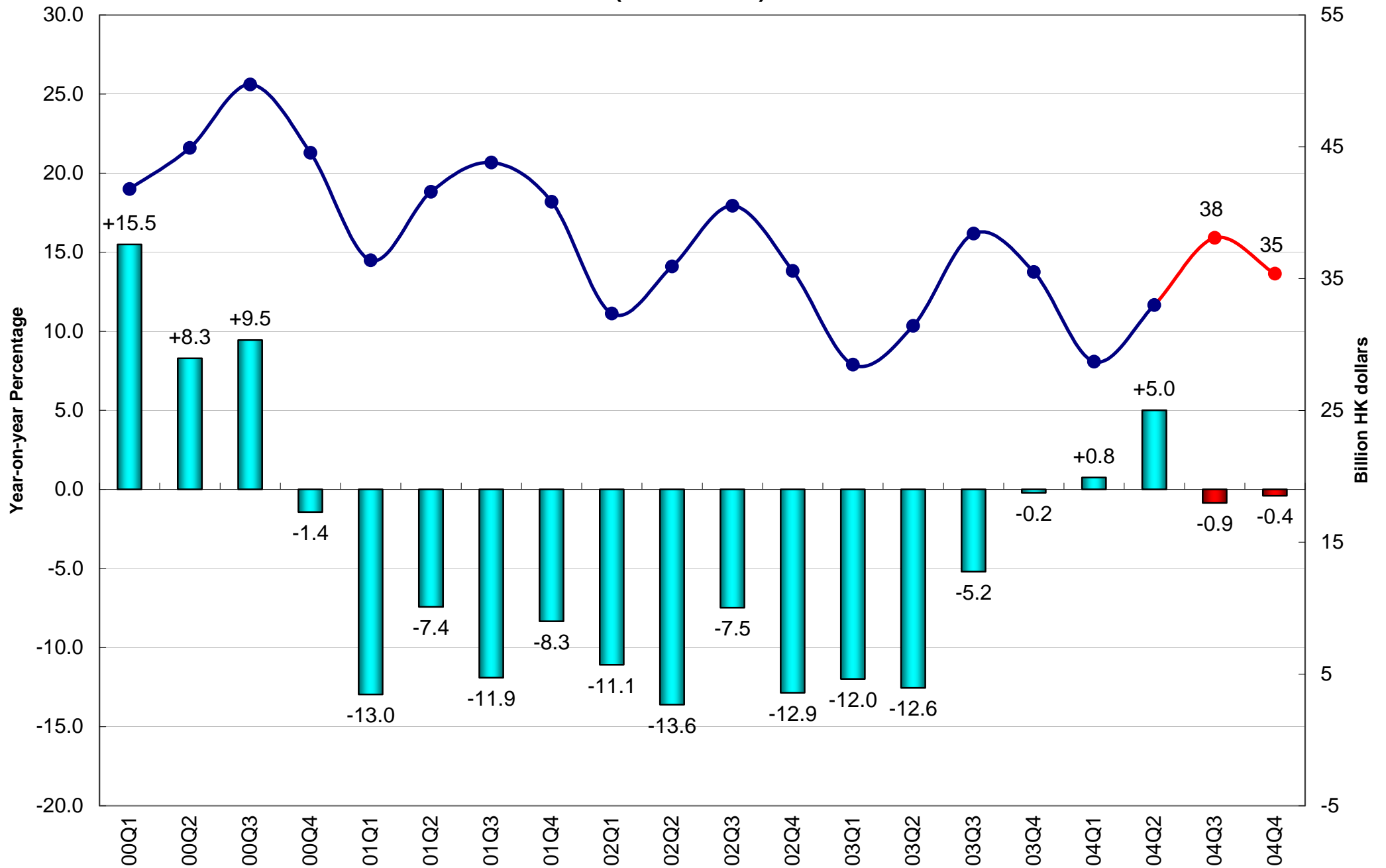
## Private Consumption Expenditure (2000 Prices)



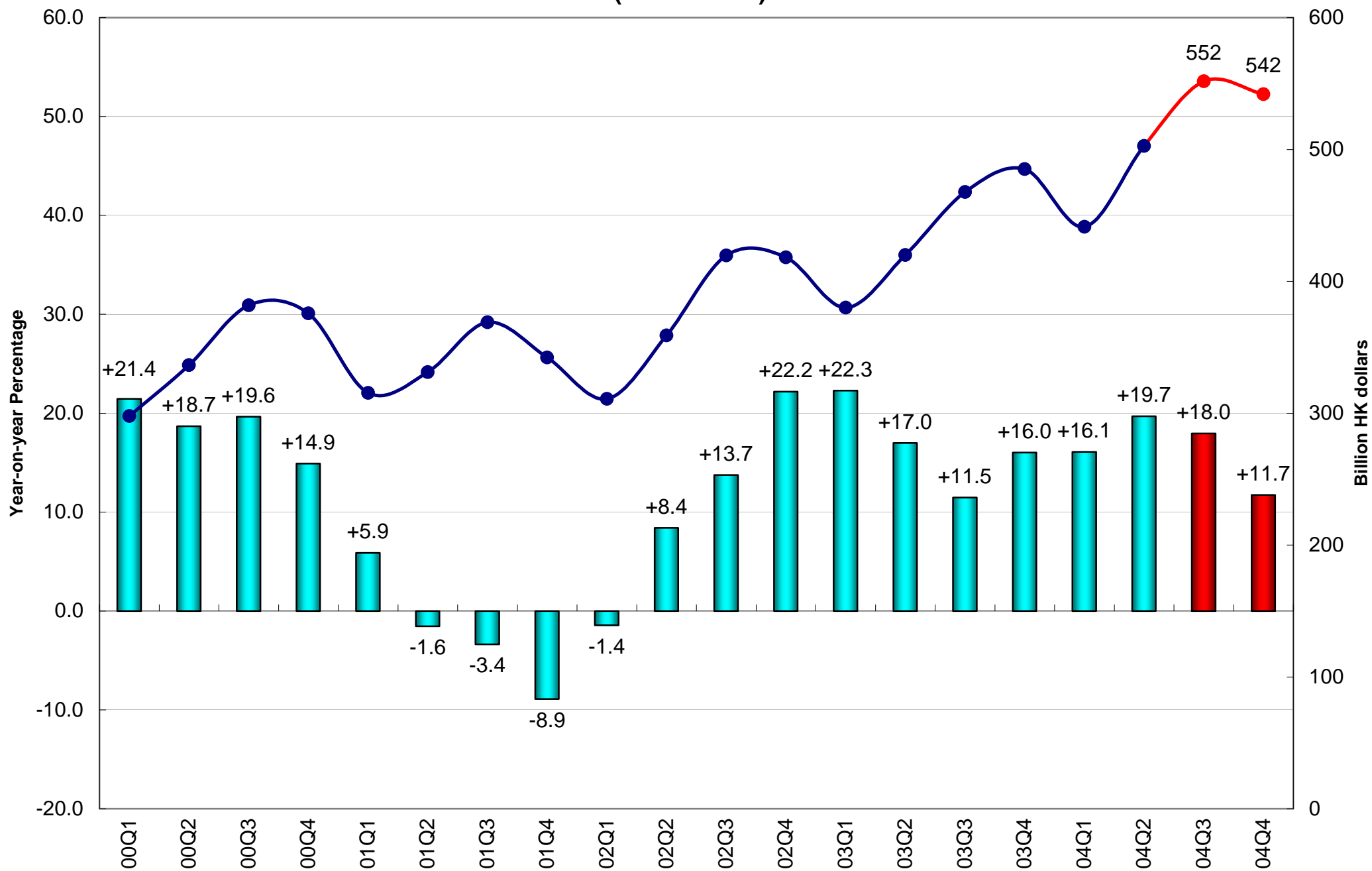
# Retail Sales Volume



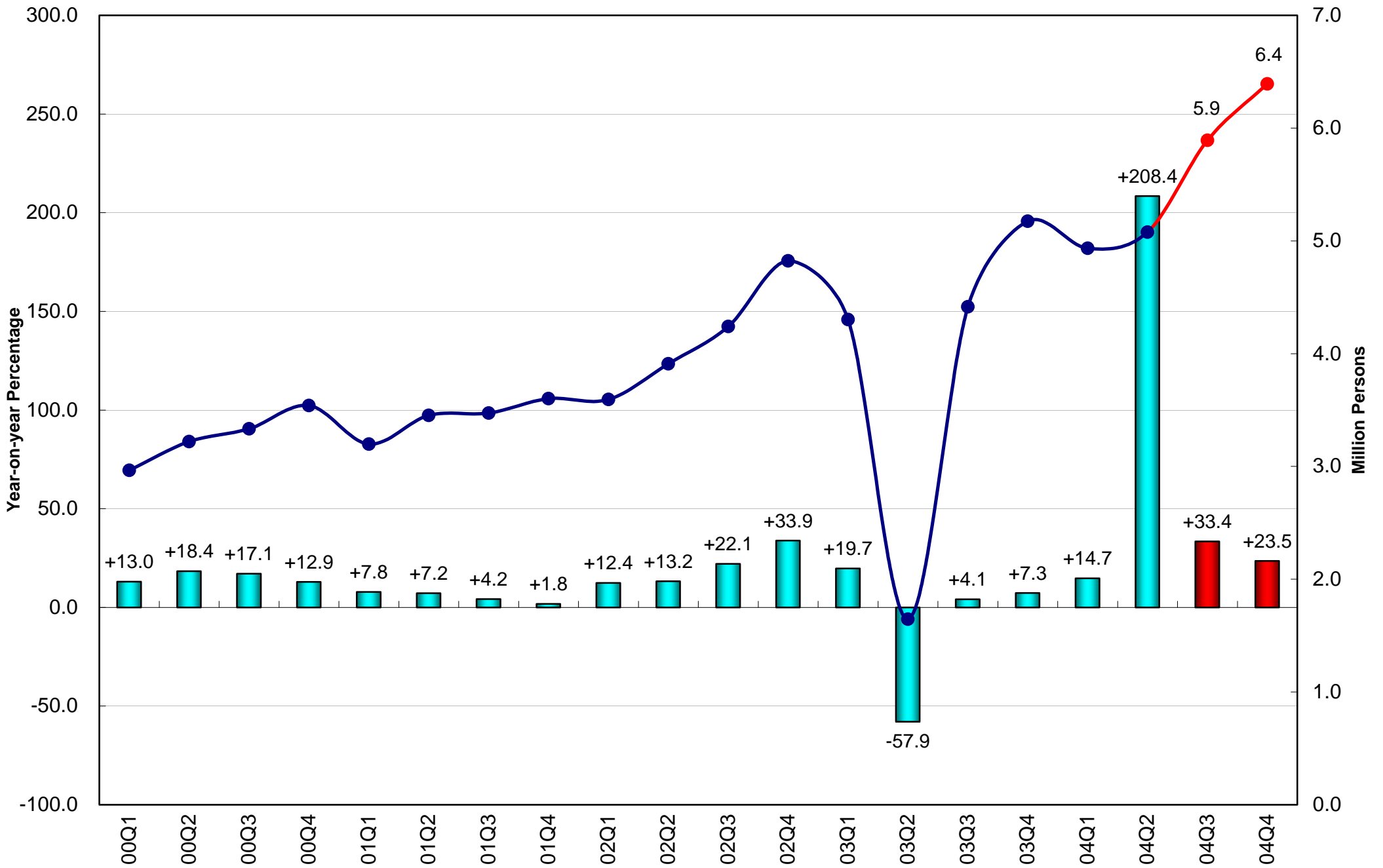
## Domestic Export of Goods (2000 Prices)



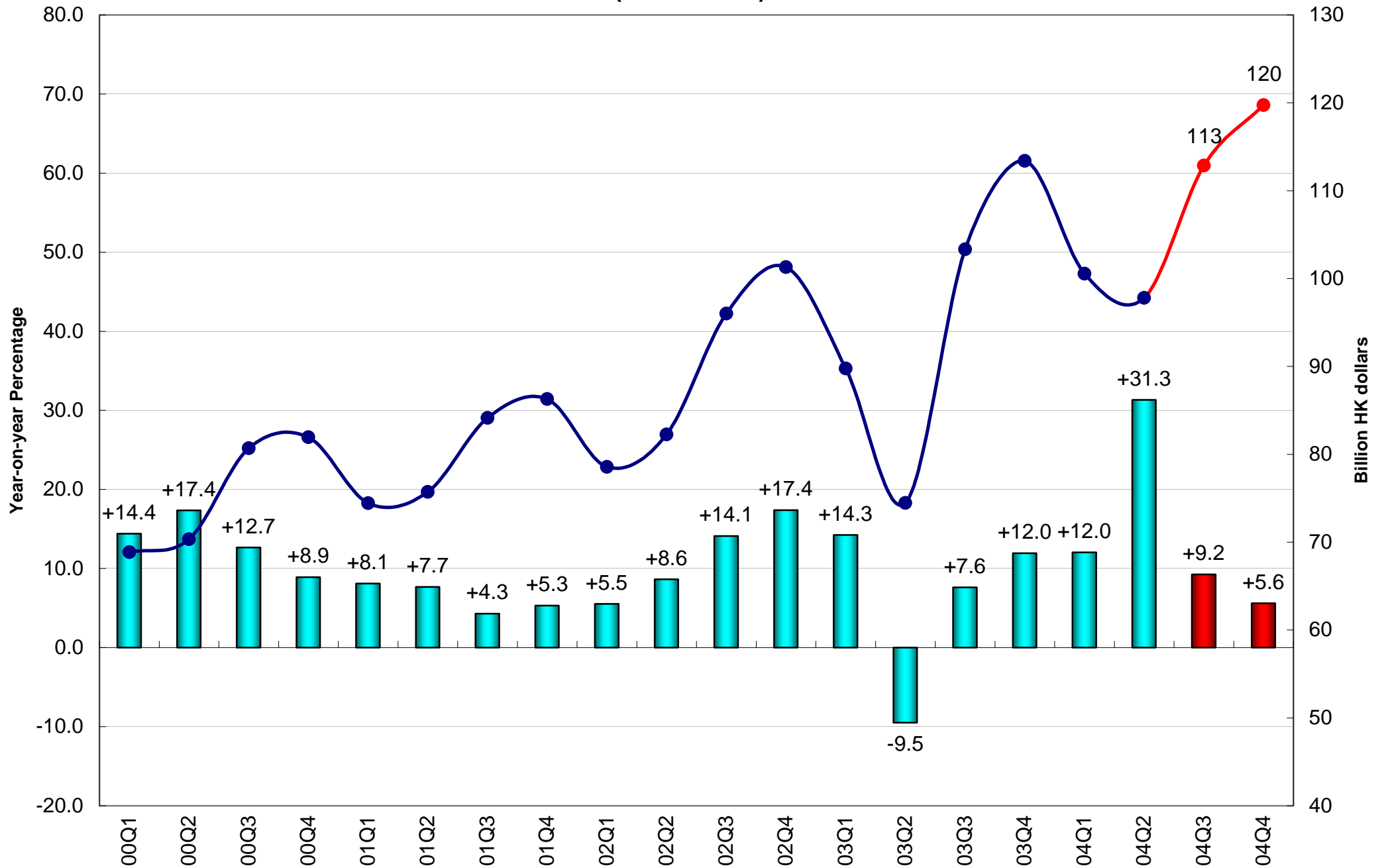
## Re-export of Goods (2000 Prices)



# Visitor Arrivals

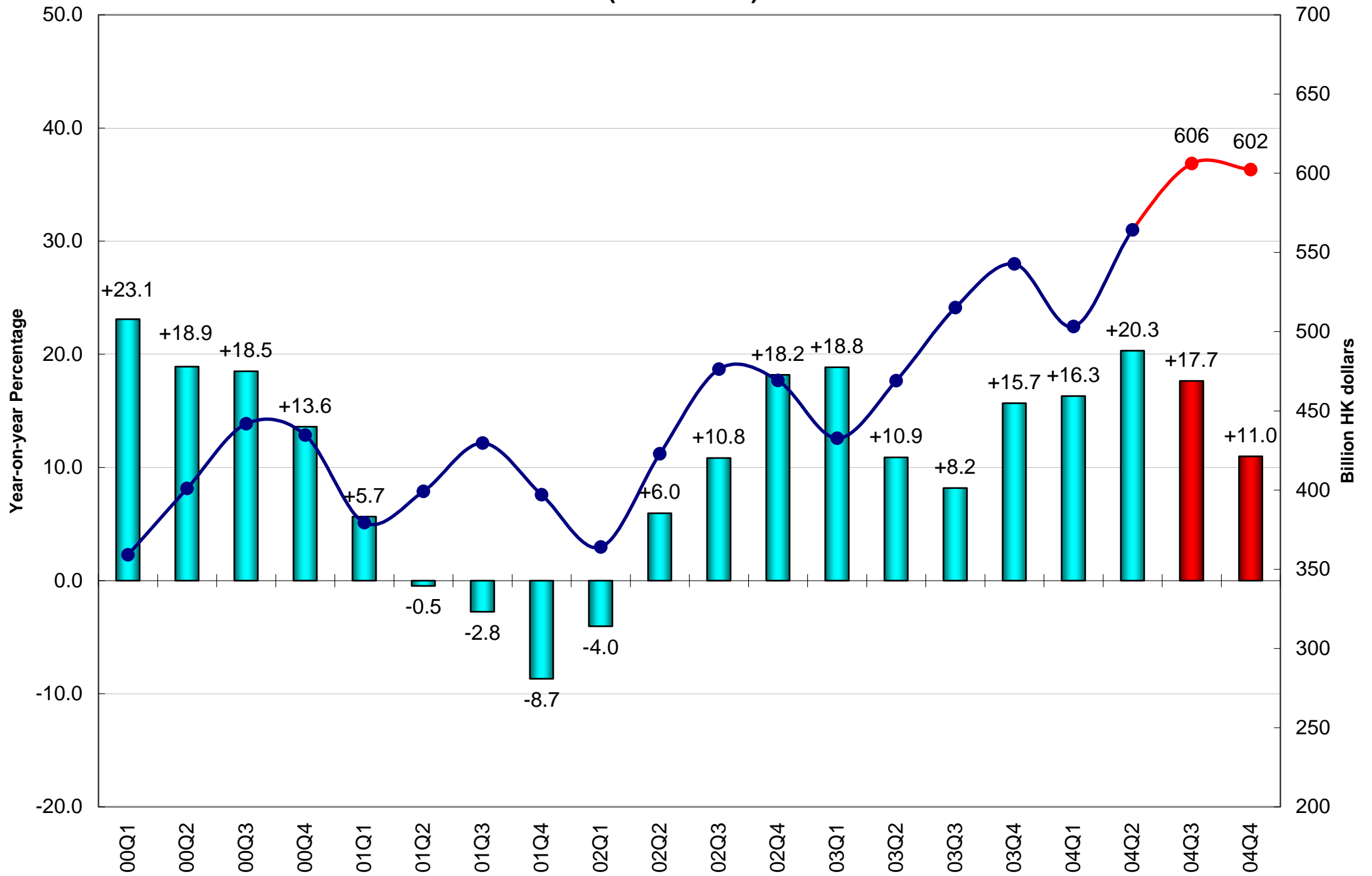


## Export of Services (2000 Prices)

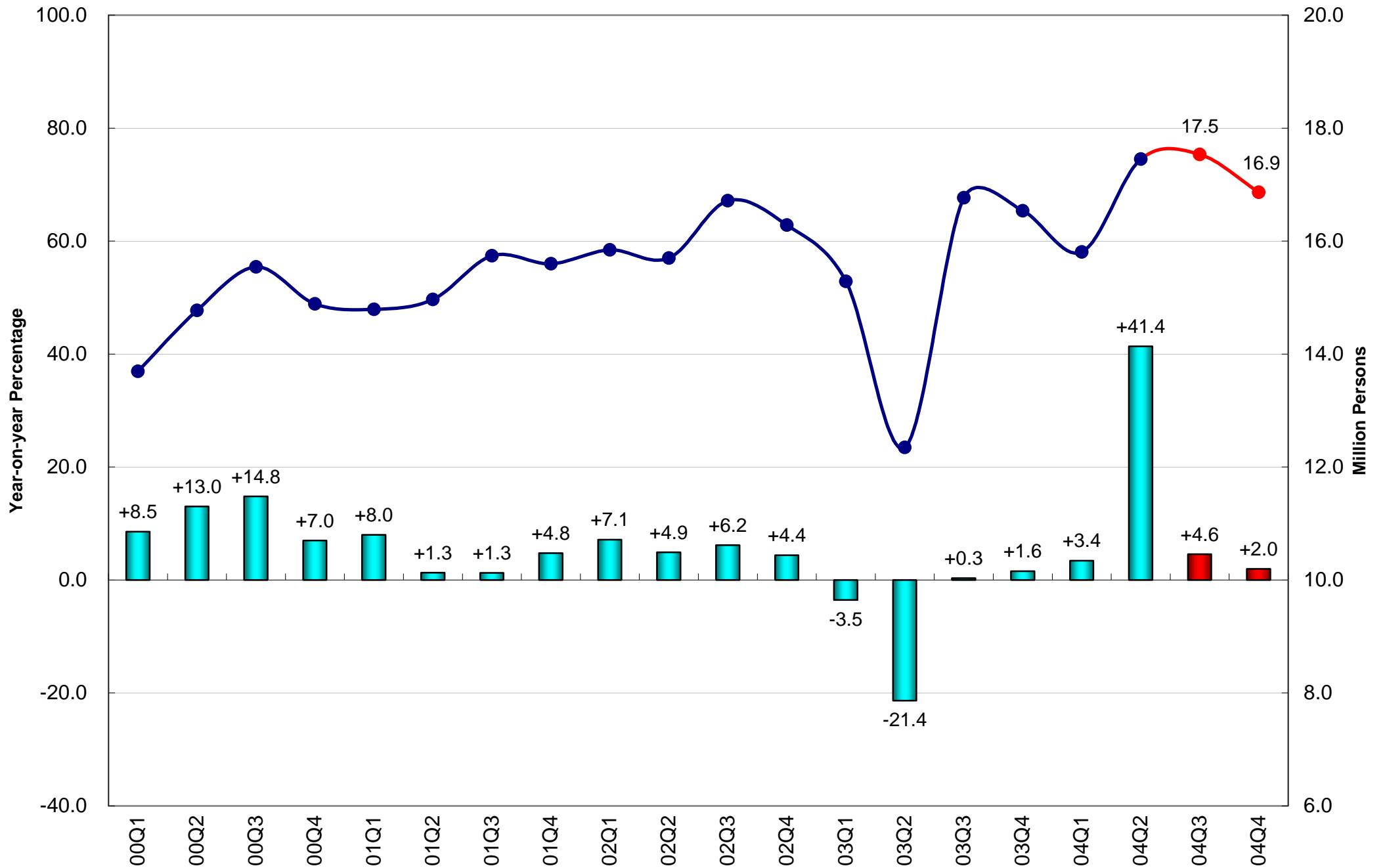




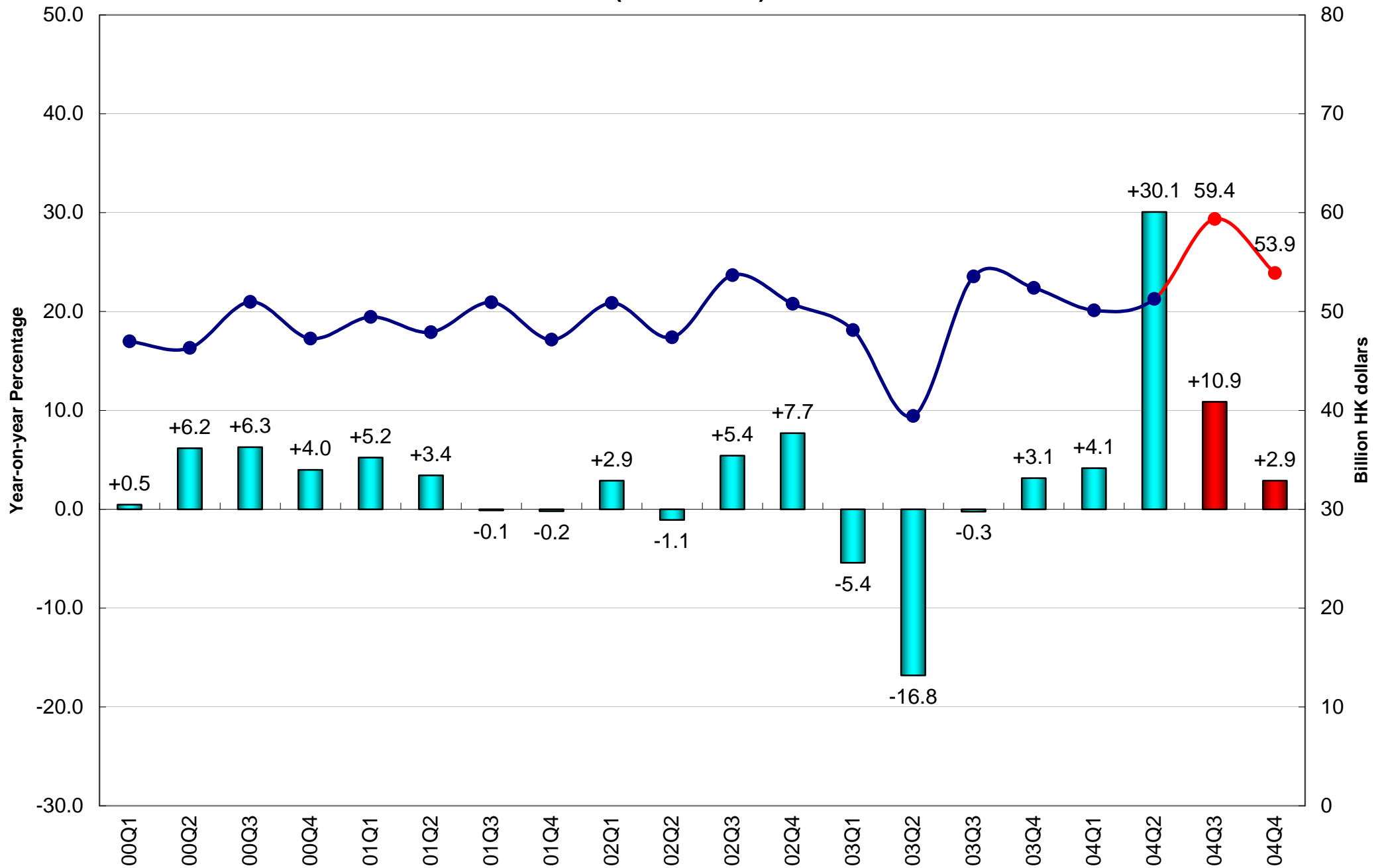
## Import of Goods (2000 Prices)



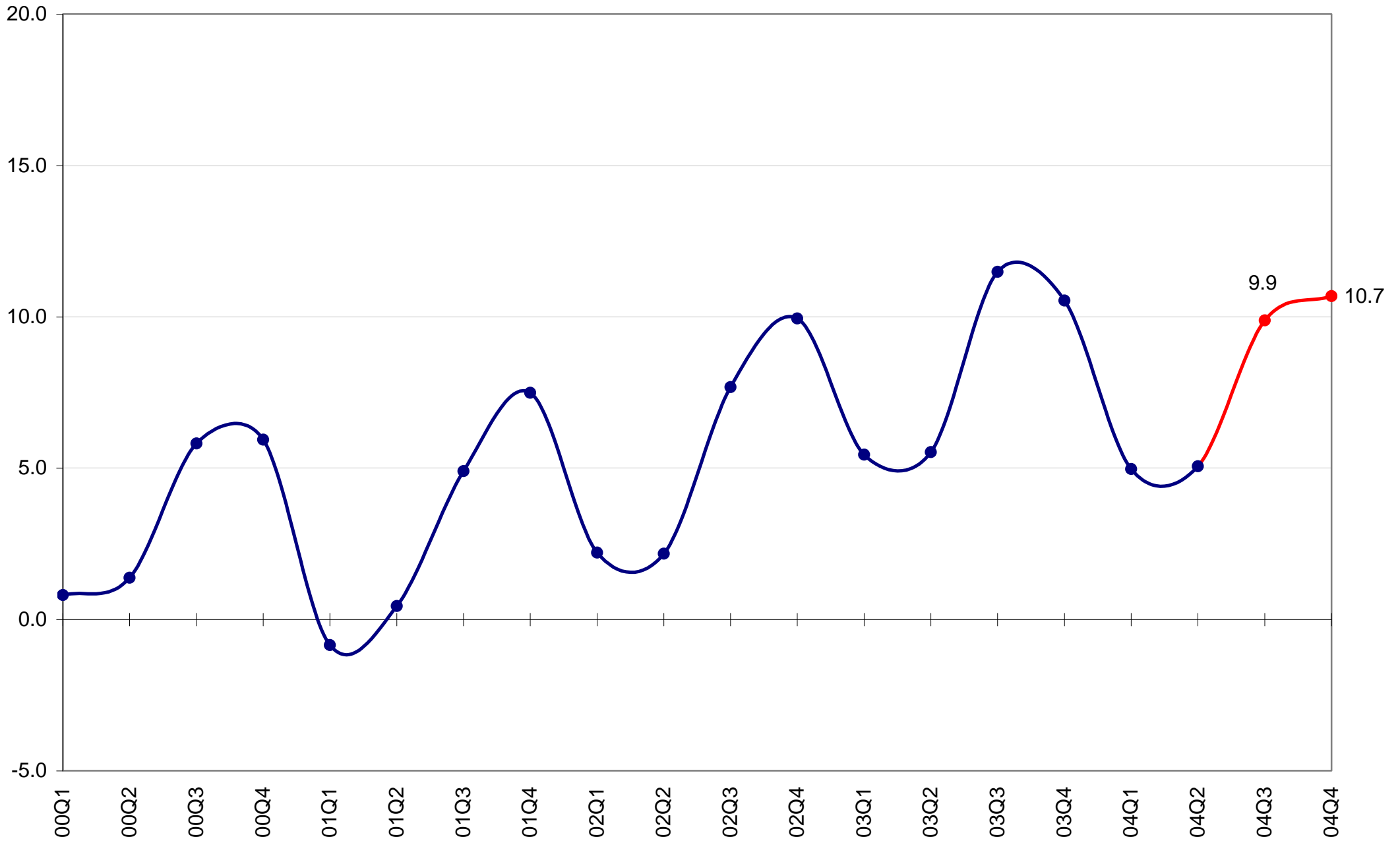
# Resident Departures



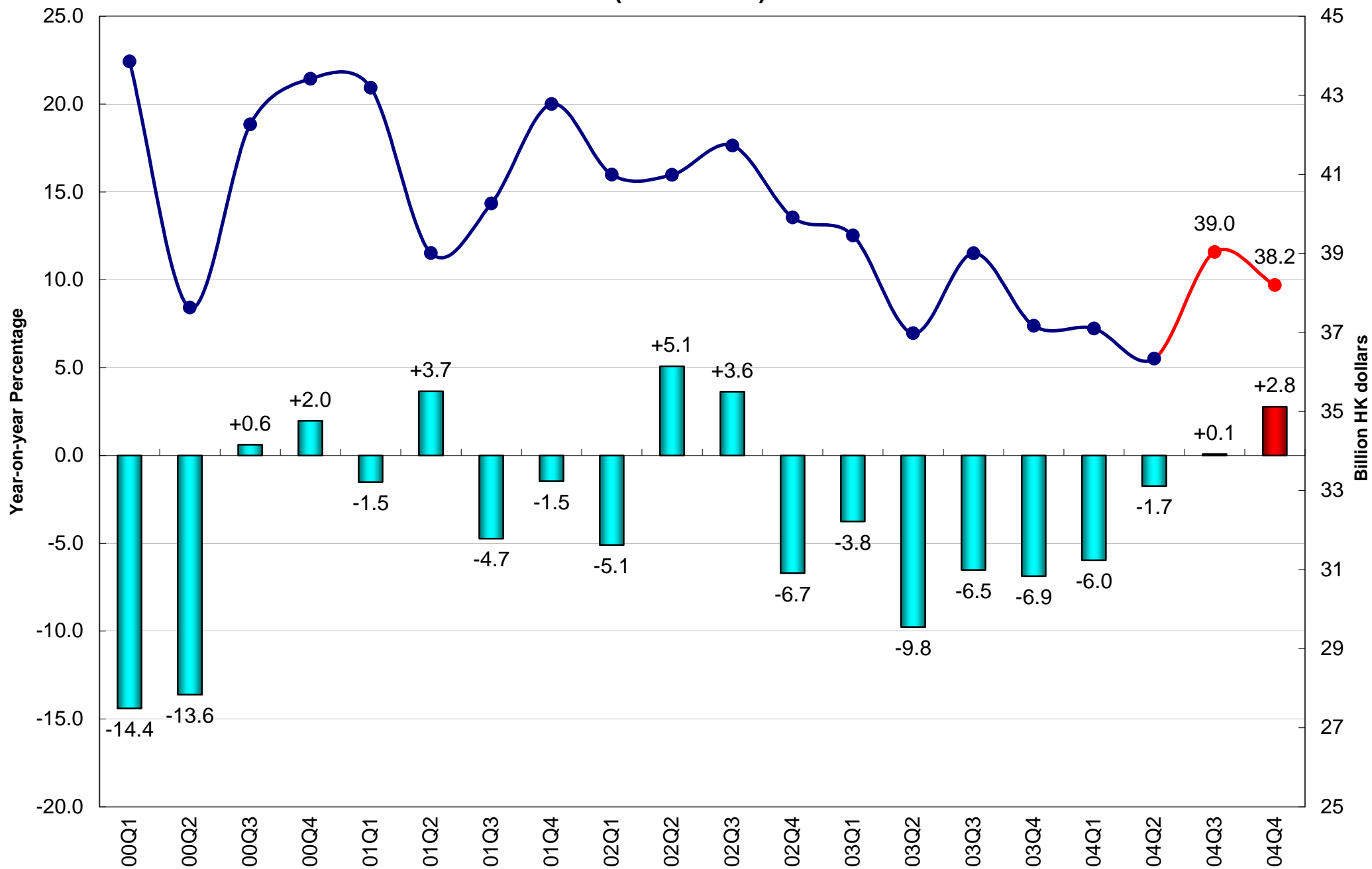
## Import of Services (2000 Prices)



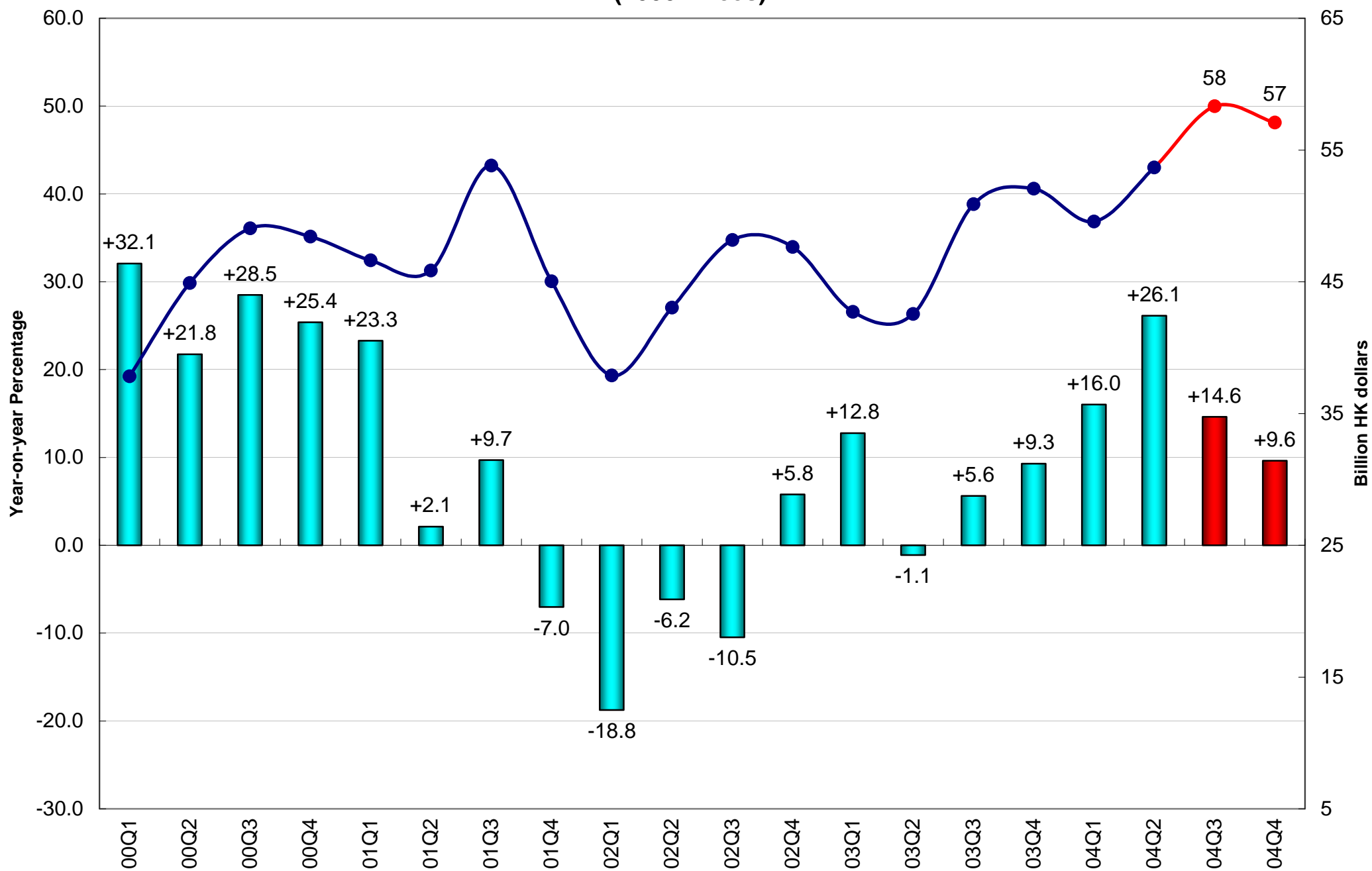
# External Trade Balance of Goods and Services (Percentage of GDP, 2000 HK Dollars)



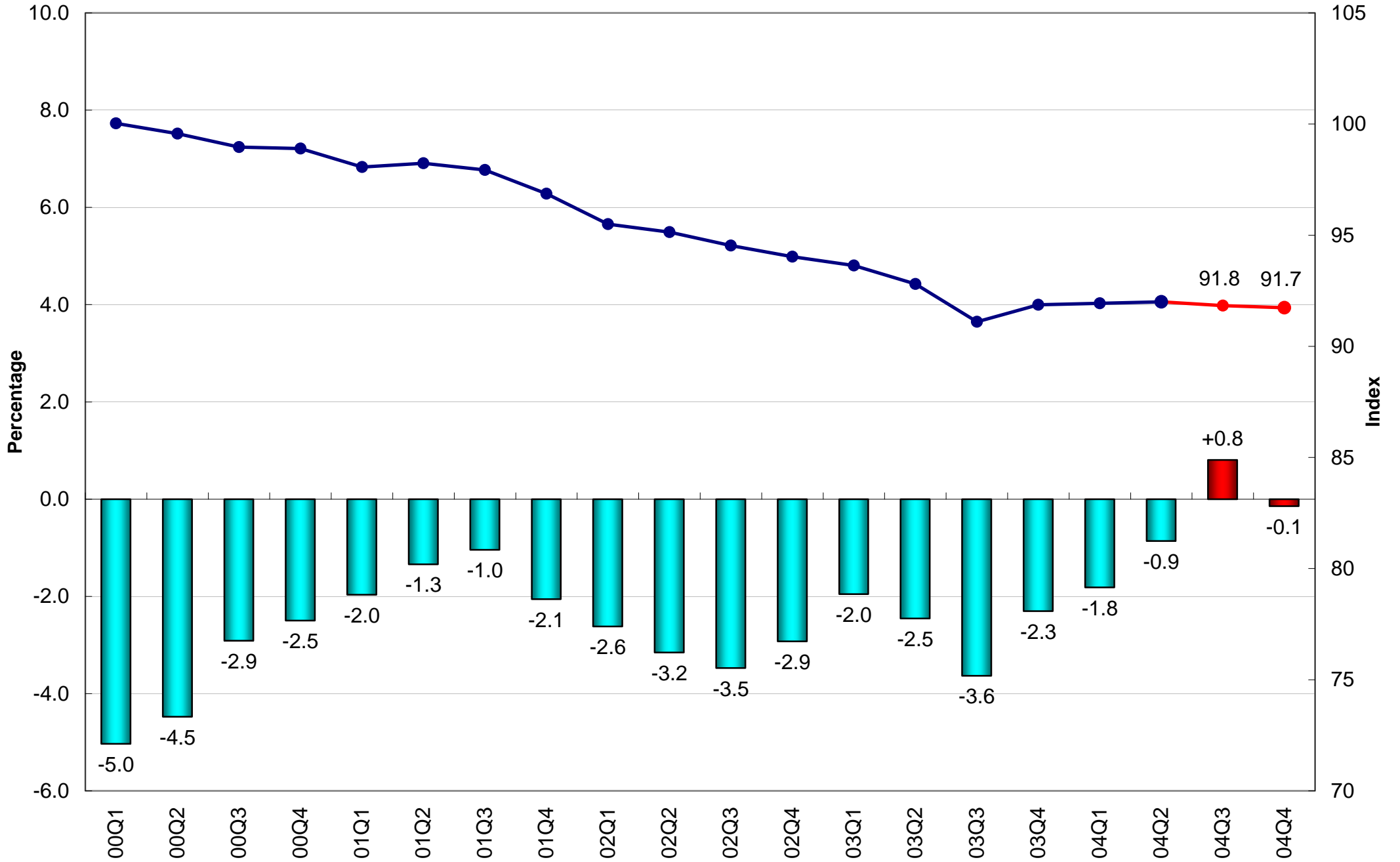
## Investment in Land and Constuction (2000 Prices)



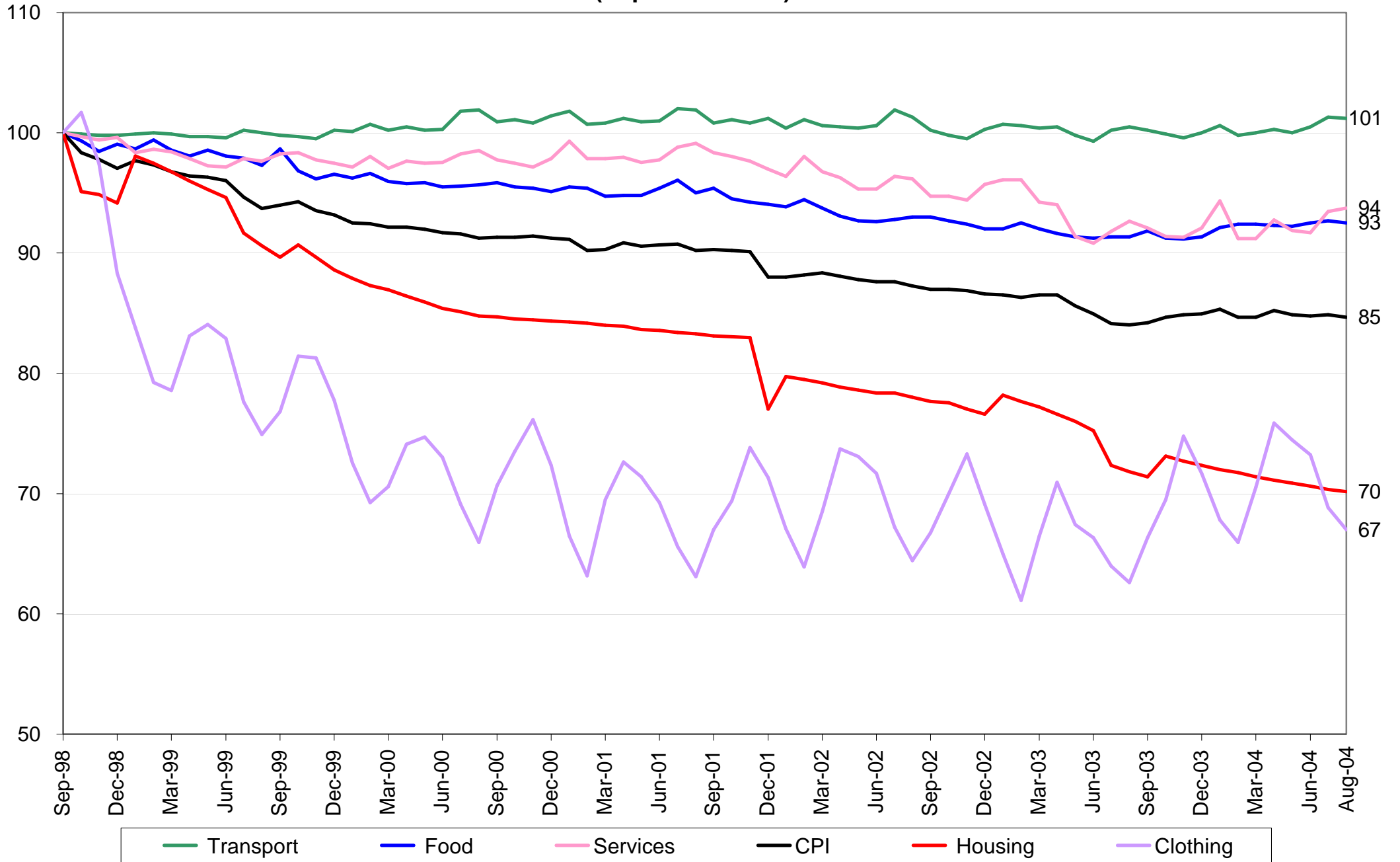
## Investment in Machinery, Equipment & Computer Software (2000 Prices)



# Consumer Price Index (10/99-09/00=100)

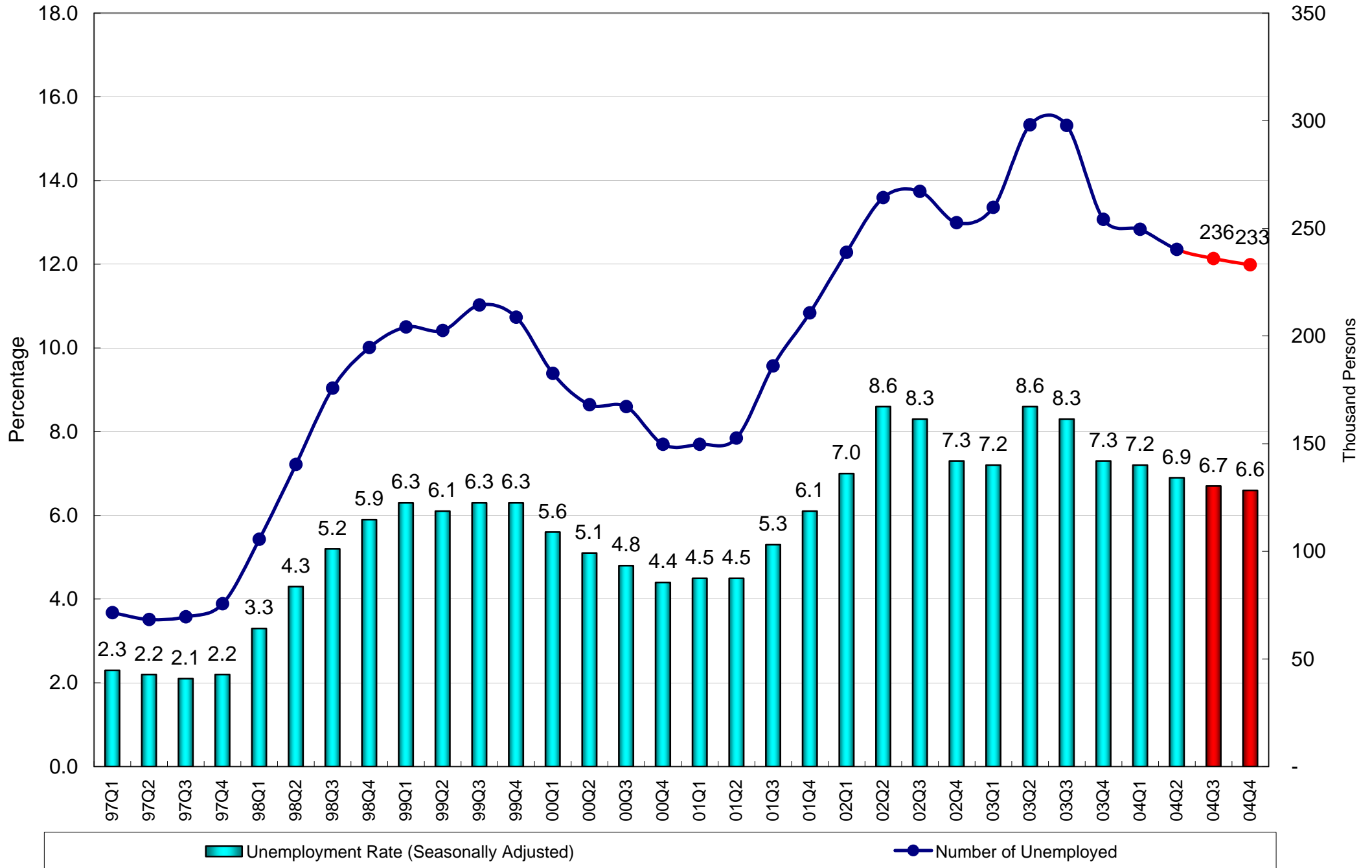


# Composite Consumer Price Index (Sept 1998 = 100)





# Unemployment



# Workers Vs Jobs (in millions)

