



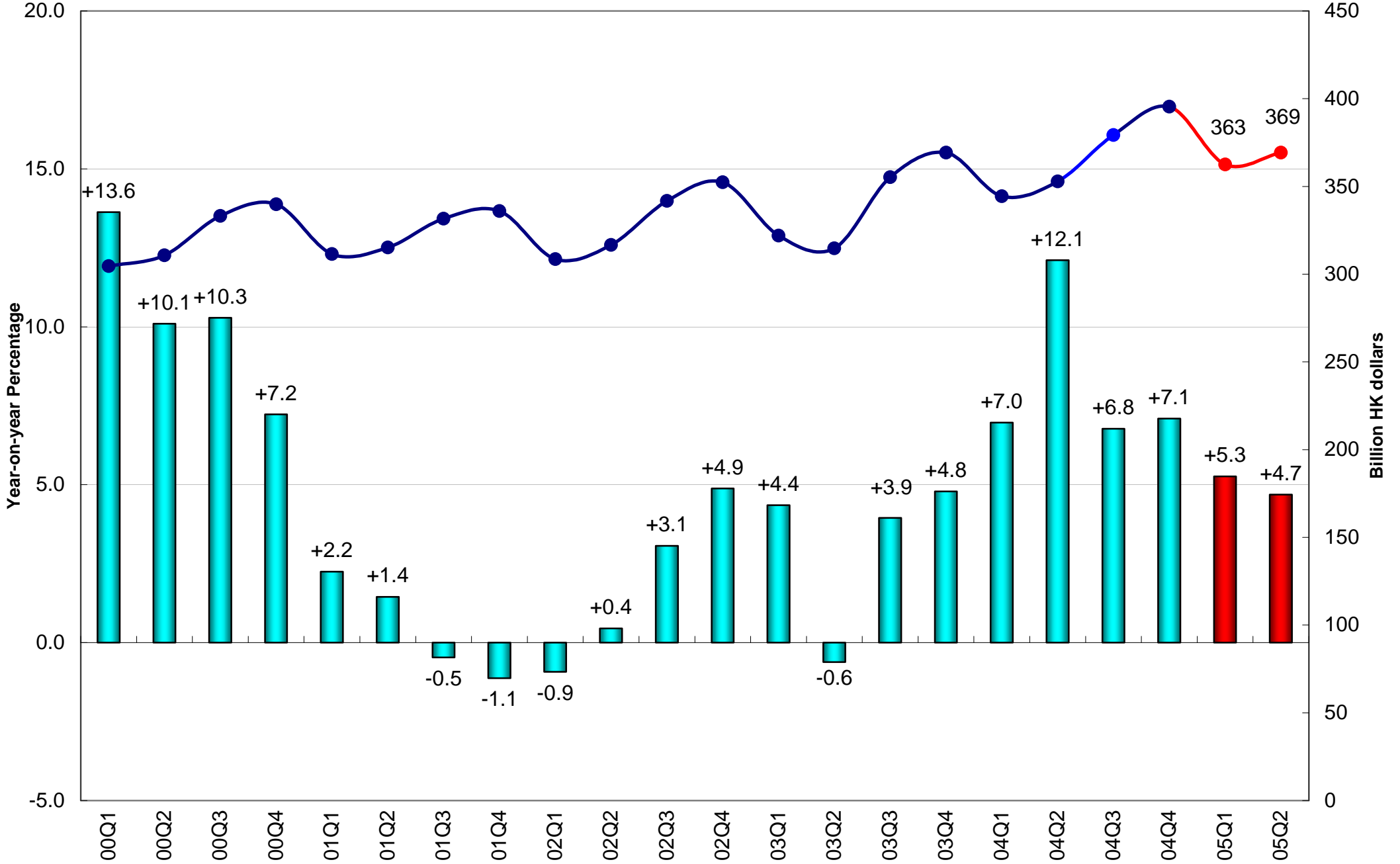
High Frequency Macroeconomic Forecasts: Second Quarter 2005

**APEC Study Centre
The University of Hong Kong**

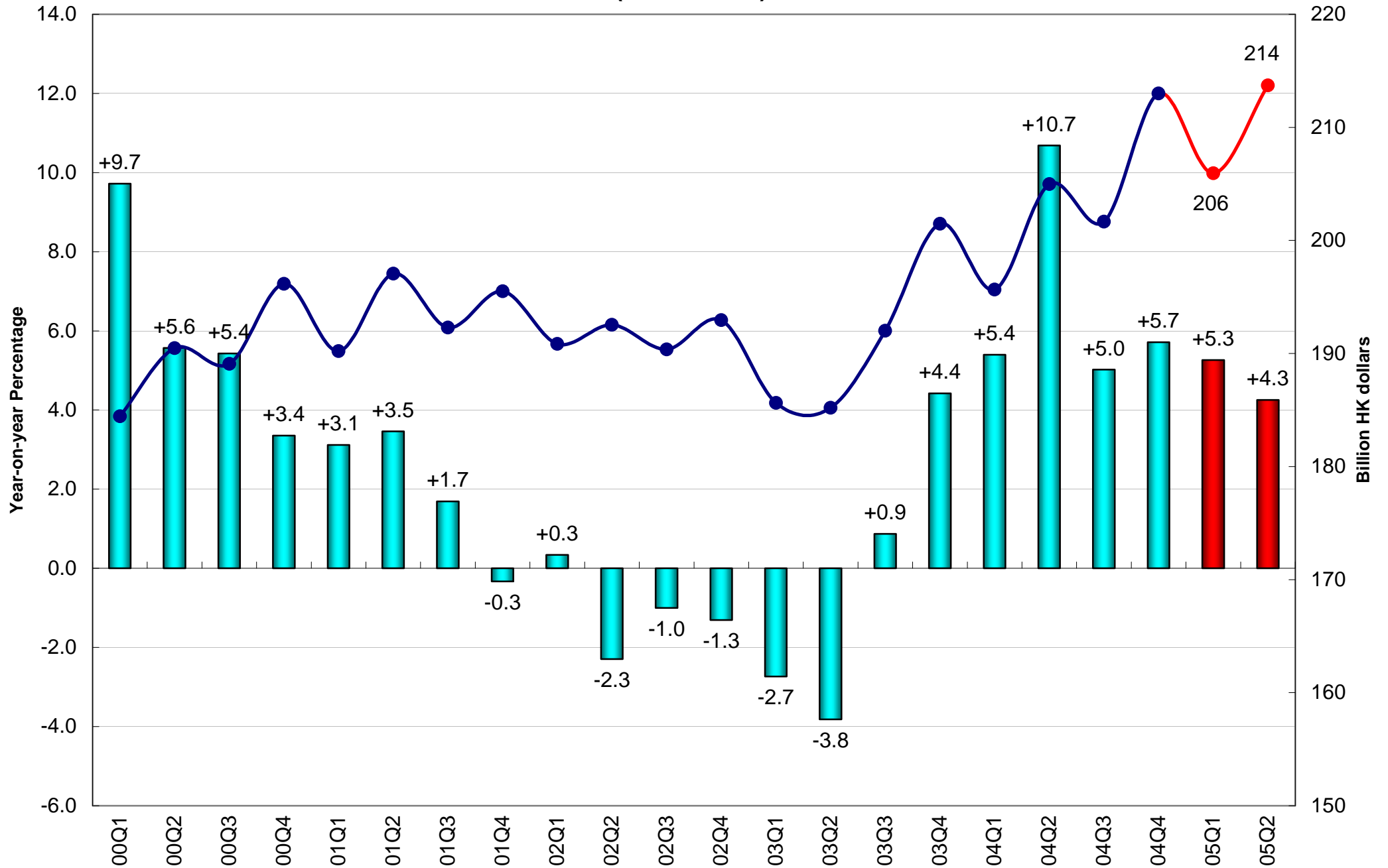
April 7, 2005

<http://www.hku.hk/apec/>

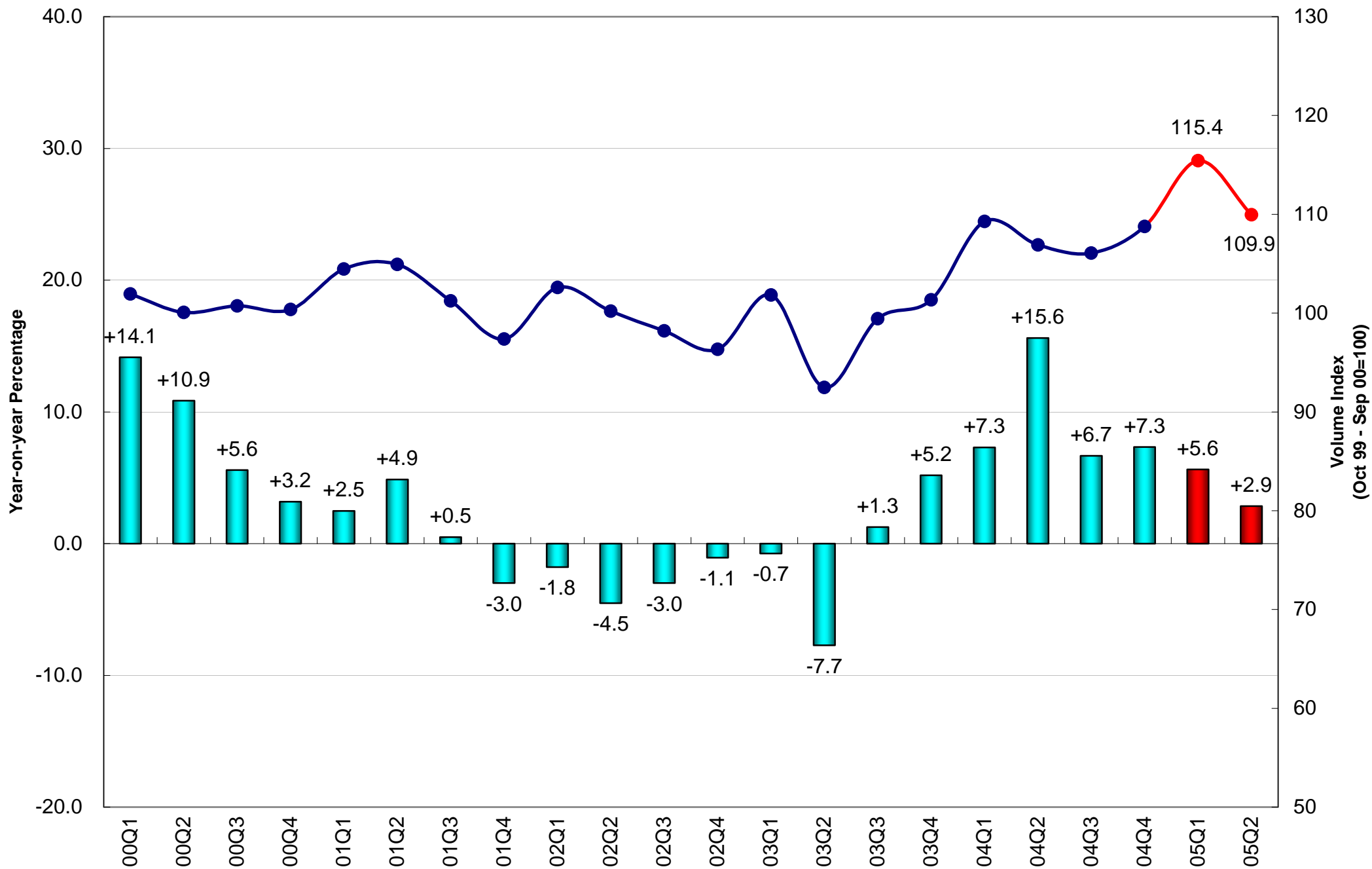
Real Gross Domestic Product (2000 Prices)



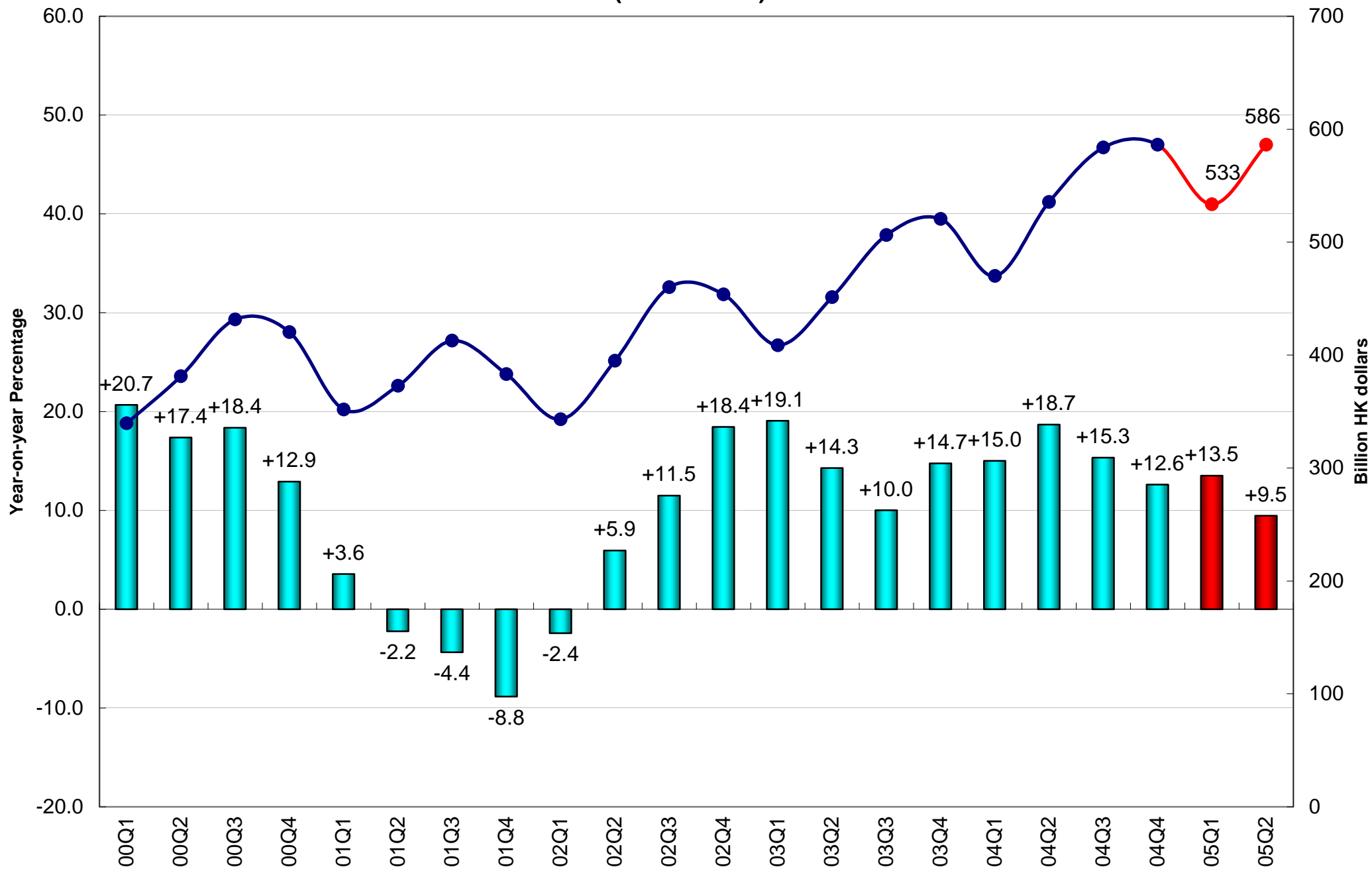
Private Consumption Expenditure (2000 Prices)



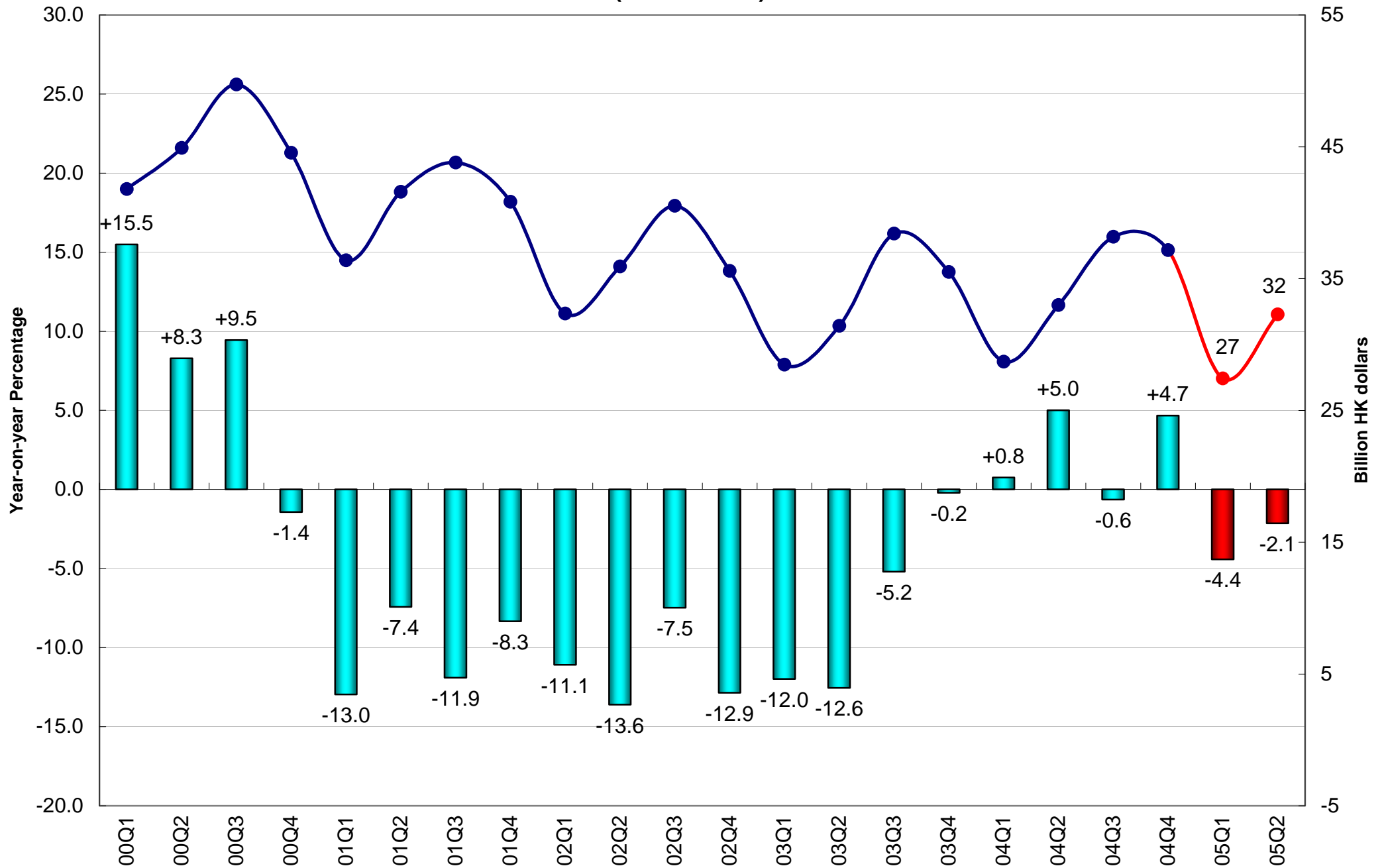
Retail Sales Volume



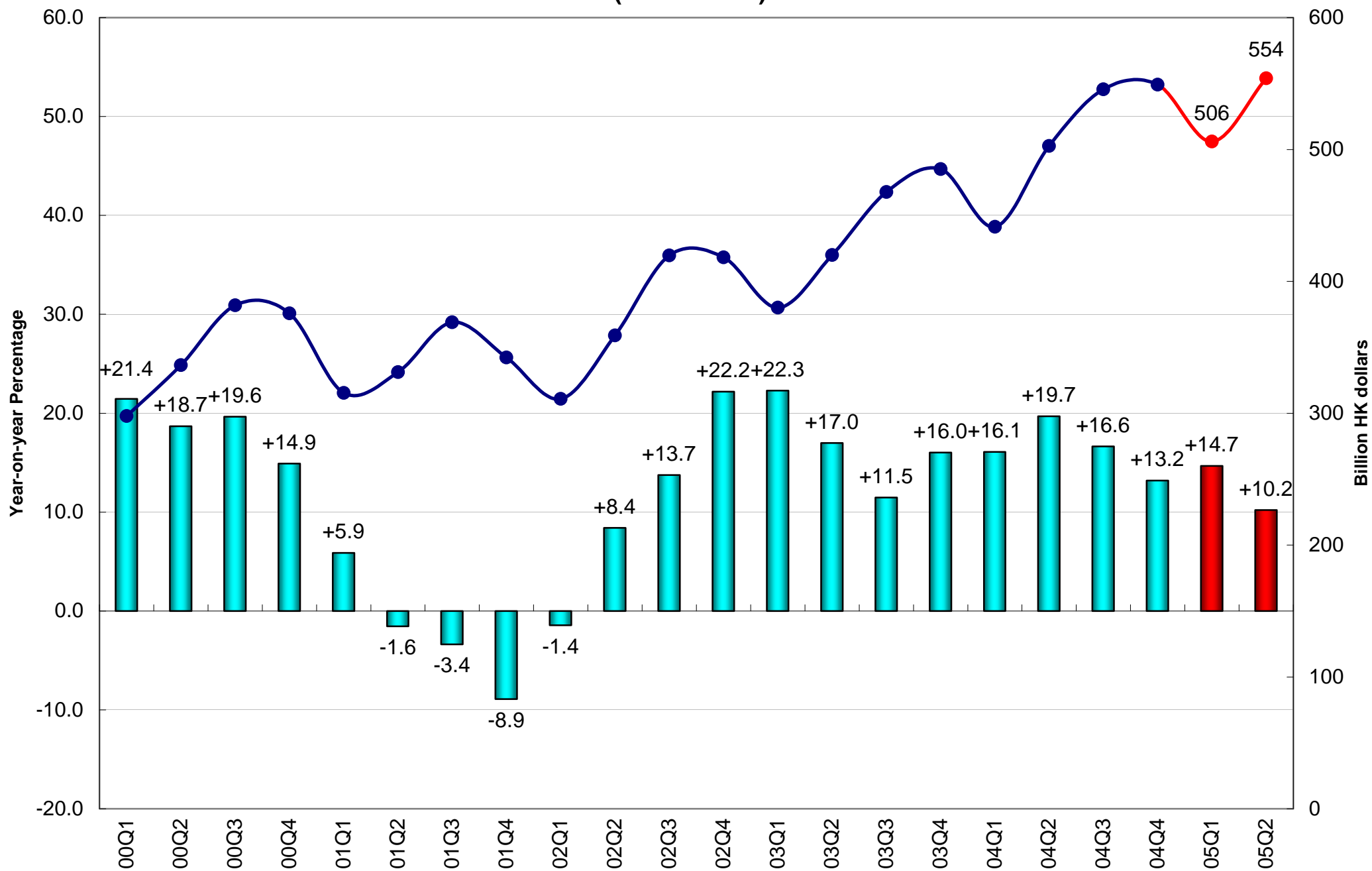
Total Export of Goods (2000 Prices)



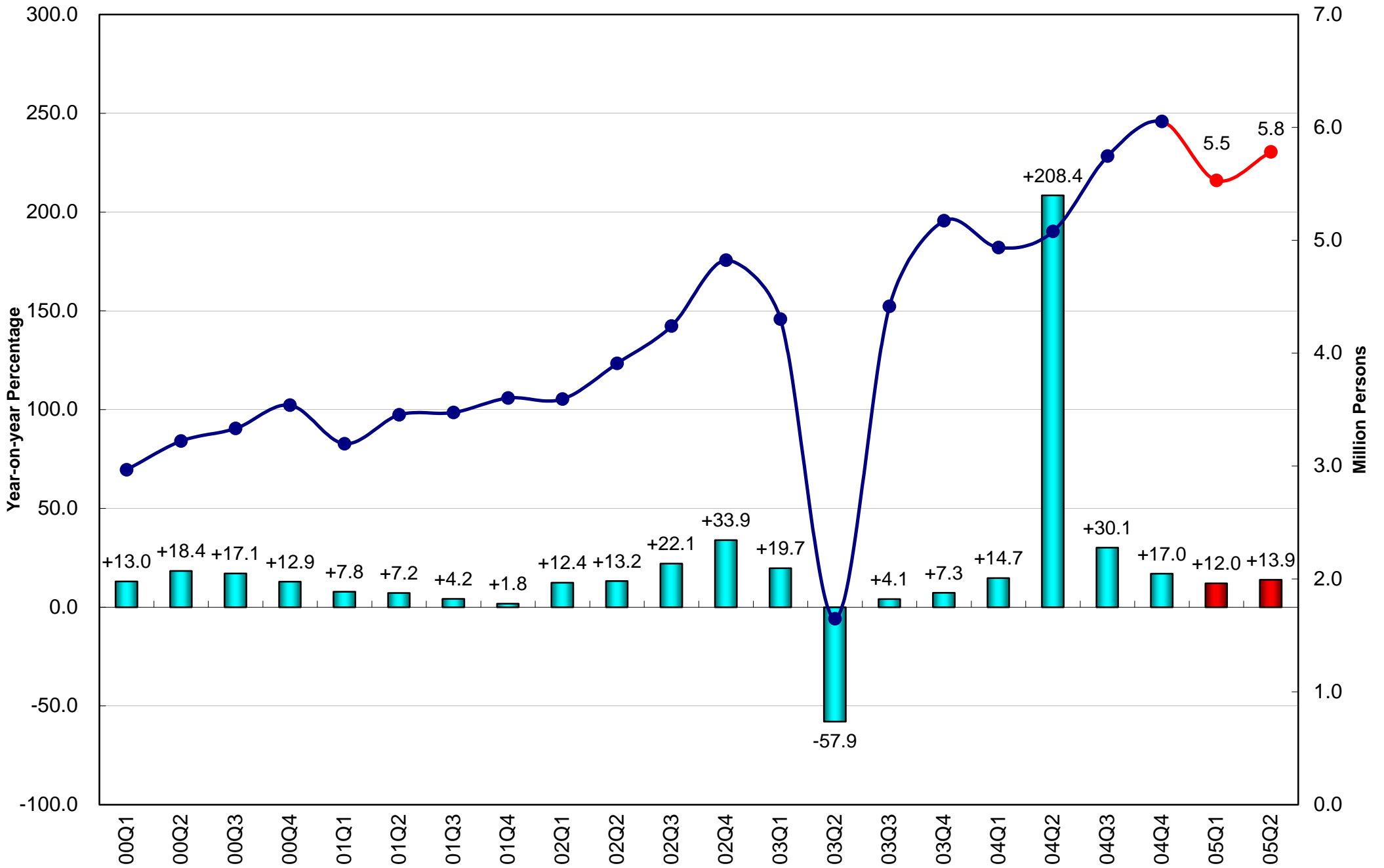
Domestic Export of Goods (2000 Prices)



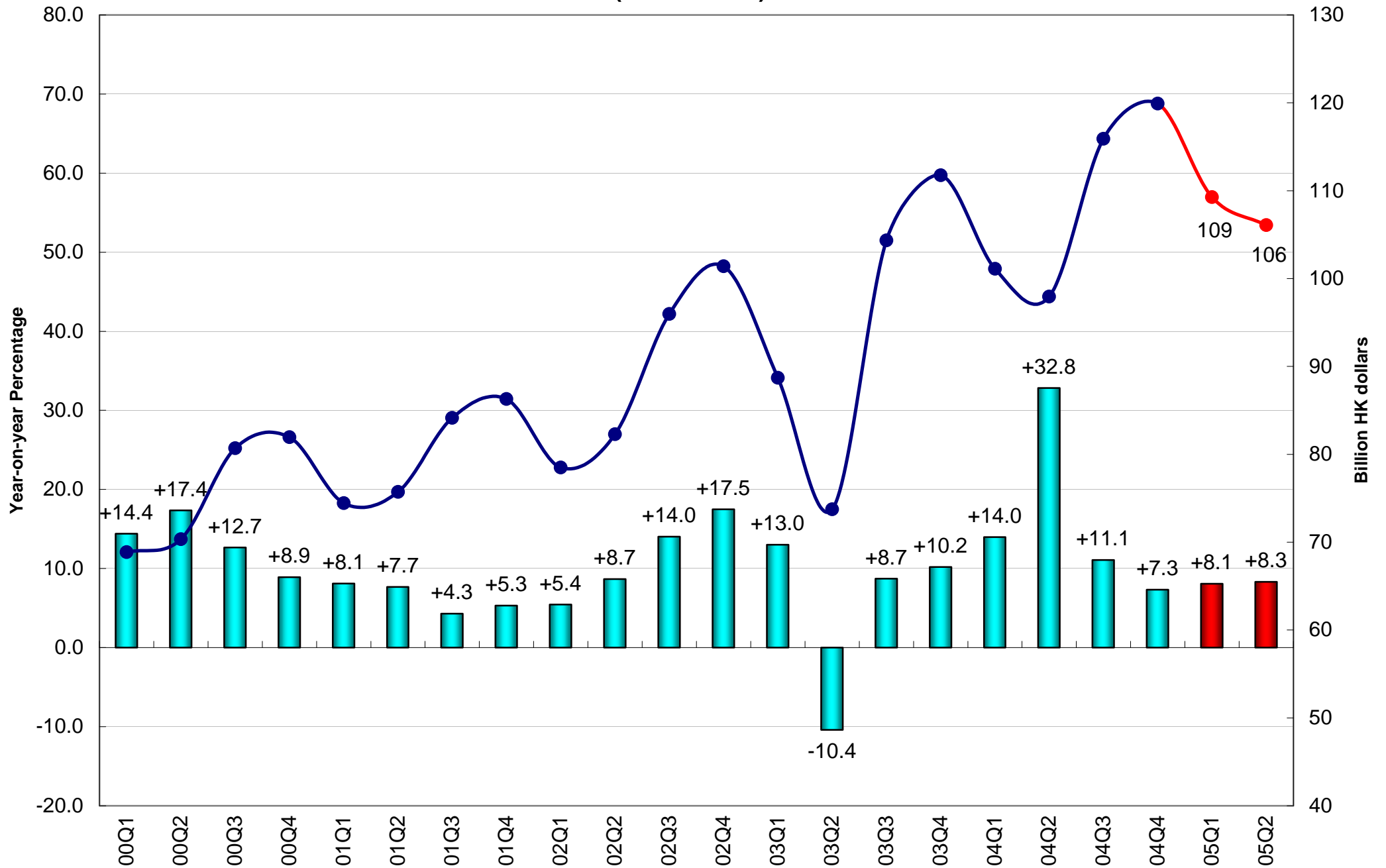
Re-export of Goods (2000 Prices)



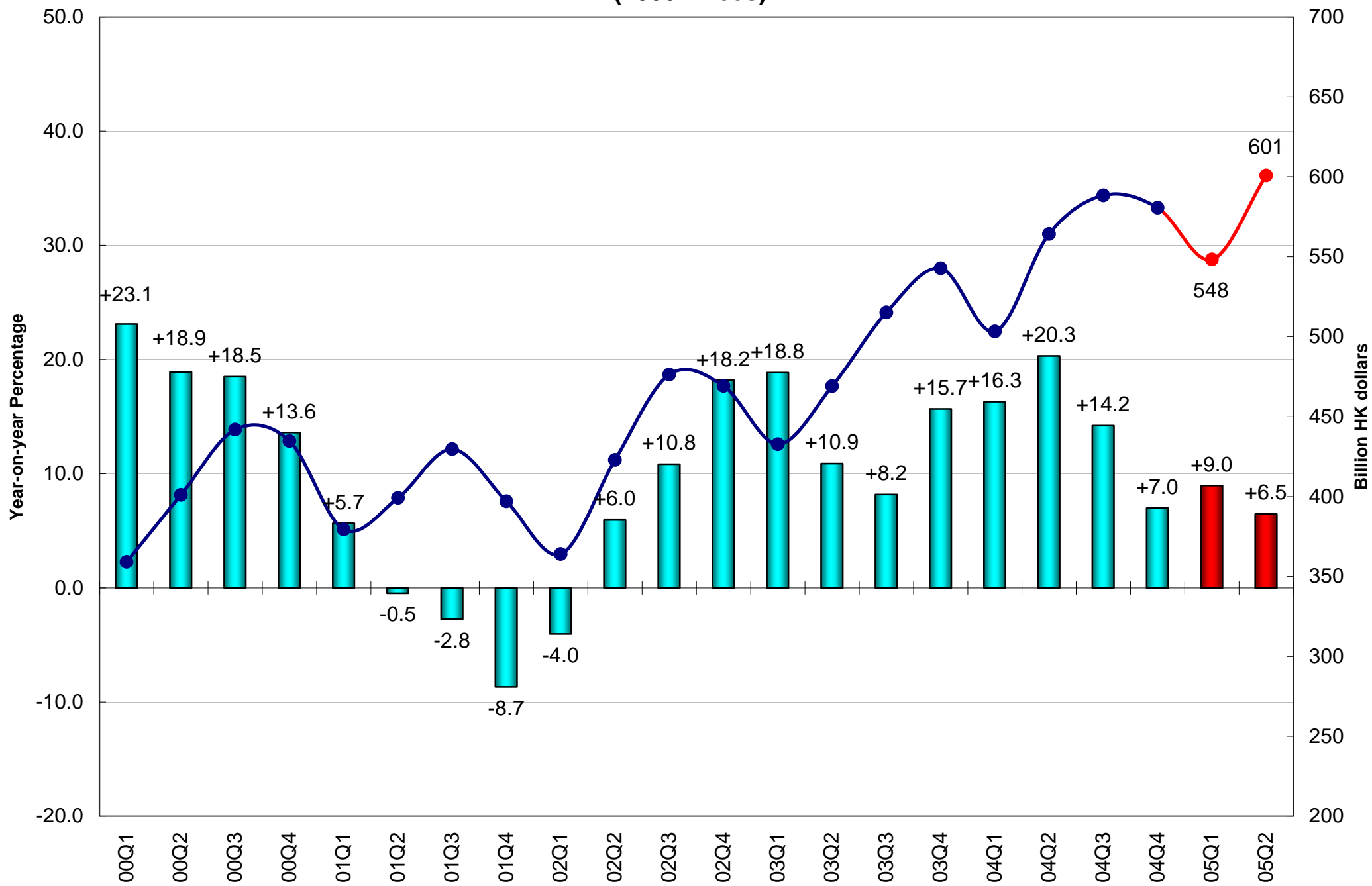
Visitor Arrivals



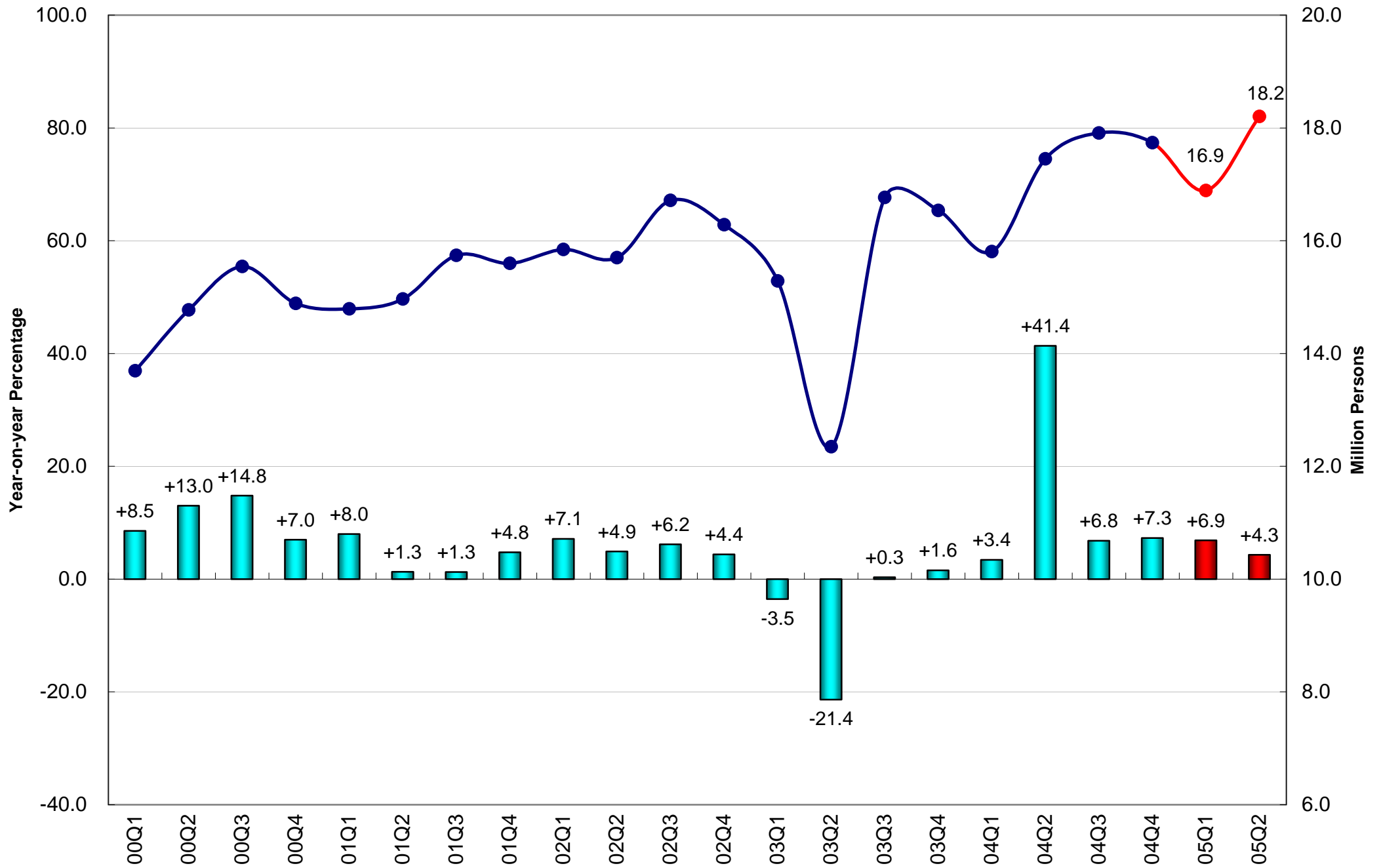
Export of Services (2000 Prices)



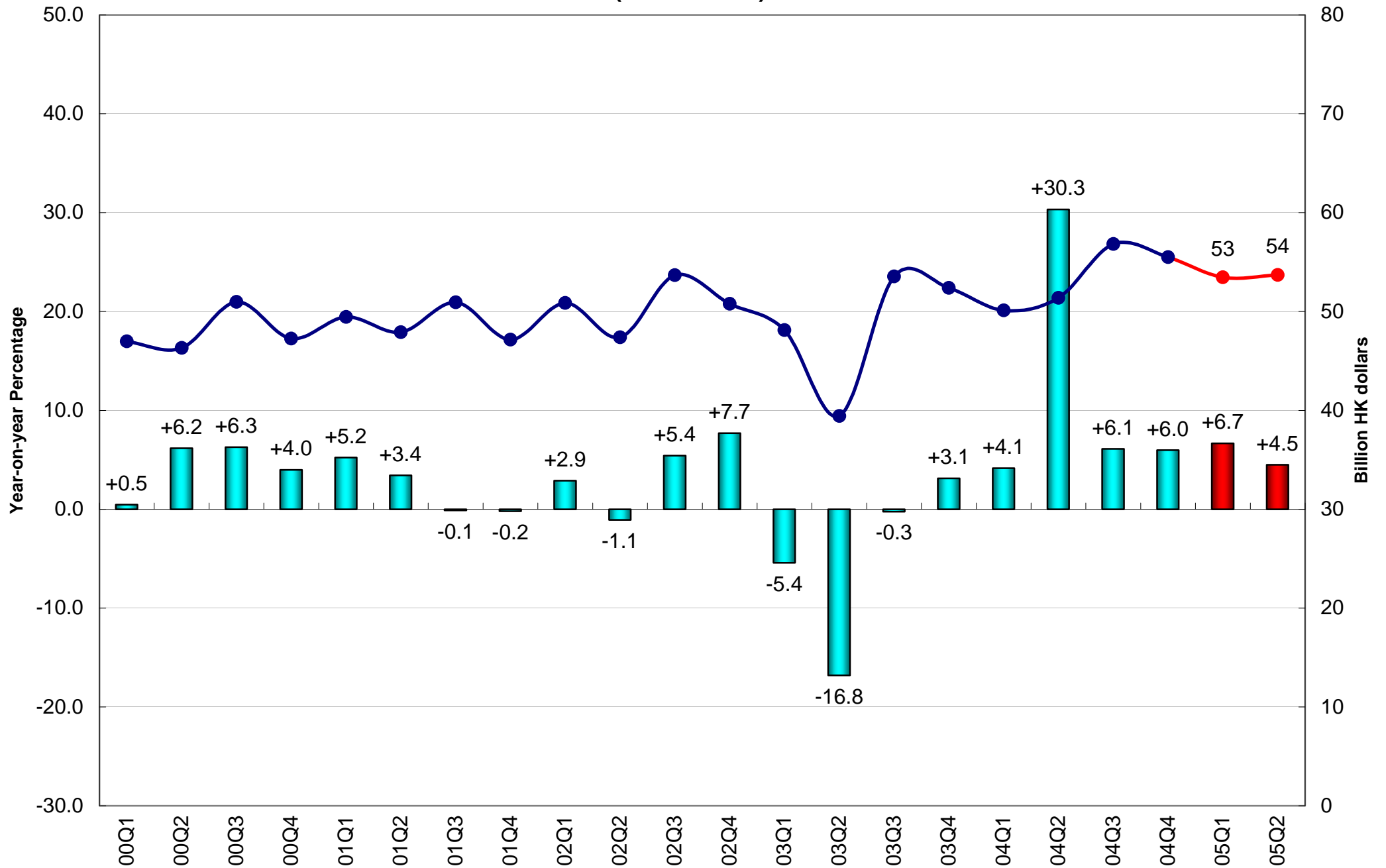
Import of Goods (2000 Prices)



Resident Departures

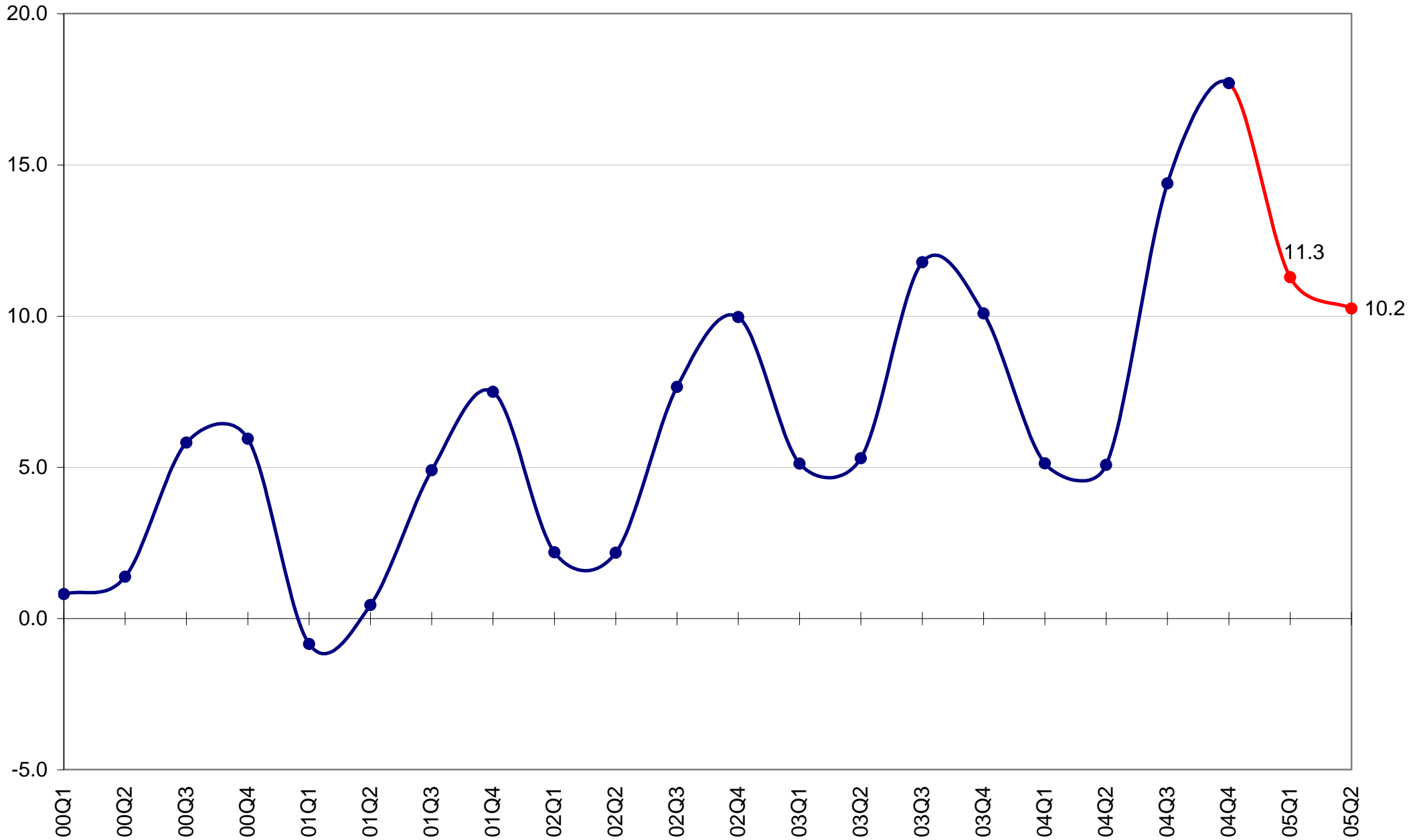


Import of Services (2000 Prices)

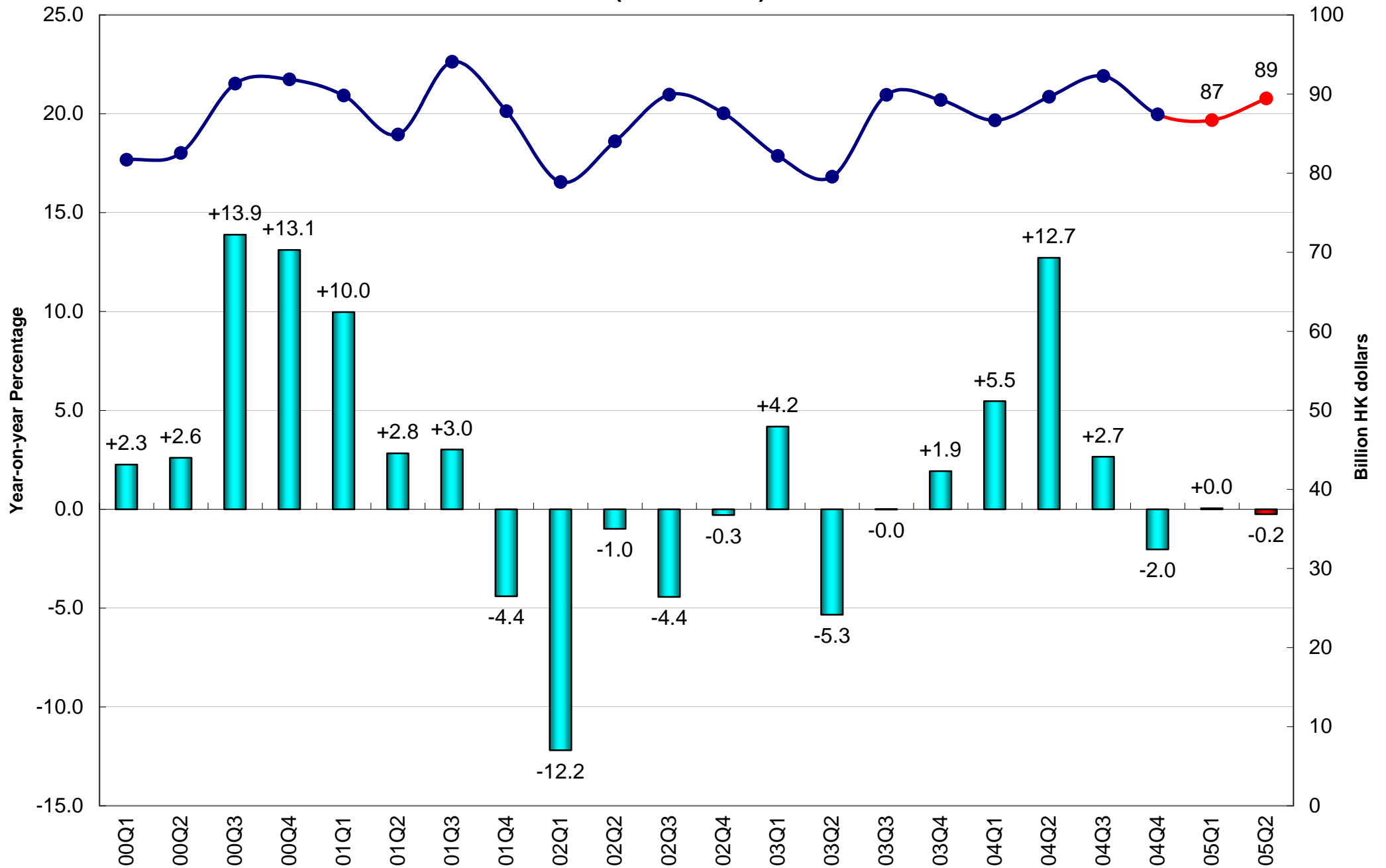


External Trade Balance of Goods and Services

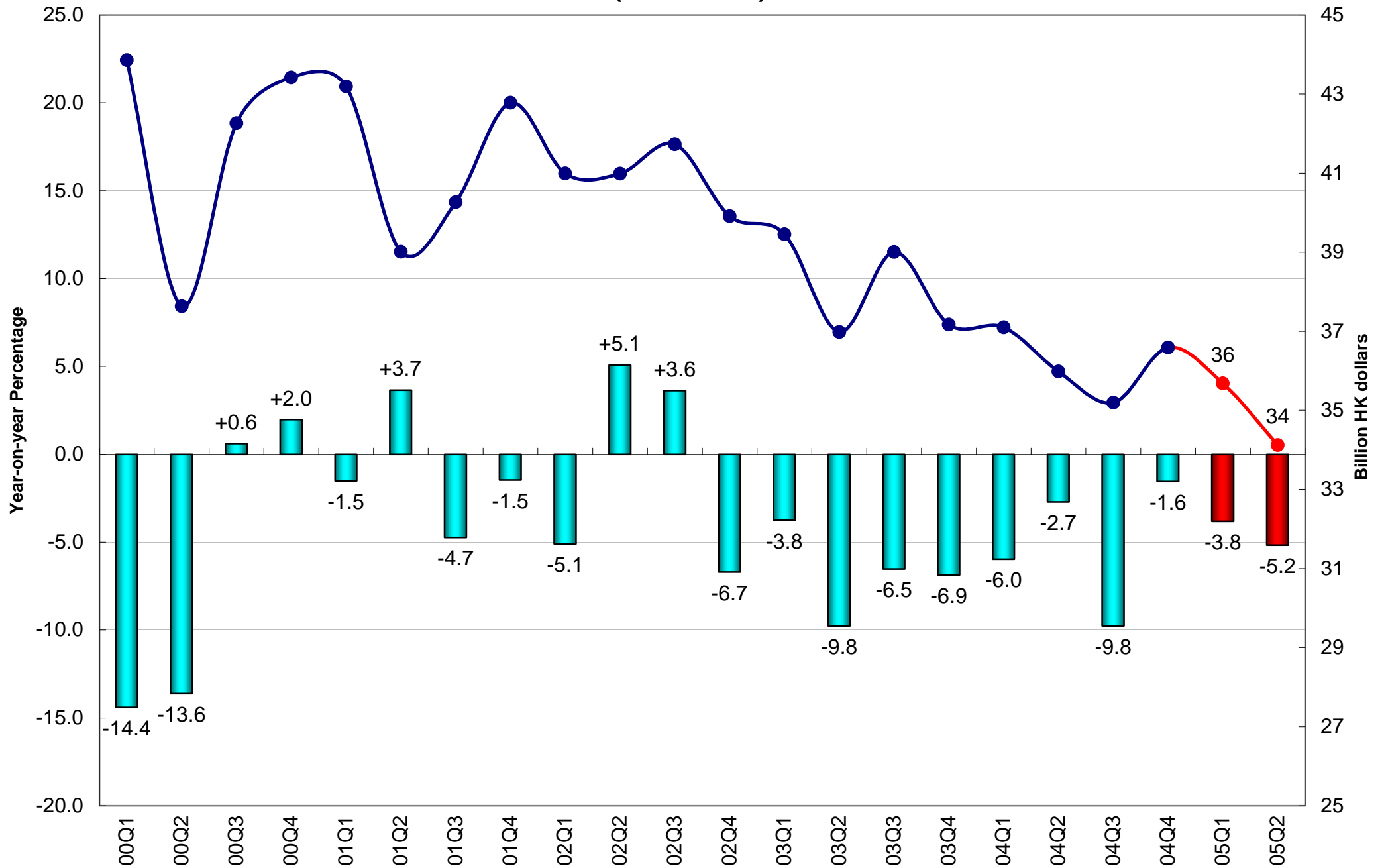
(Percentage of GDP, 2000 HK Dollars)



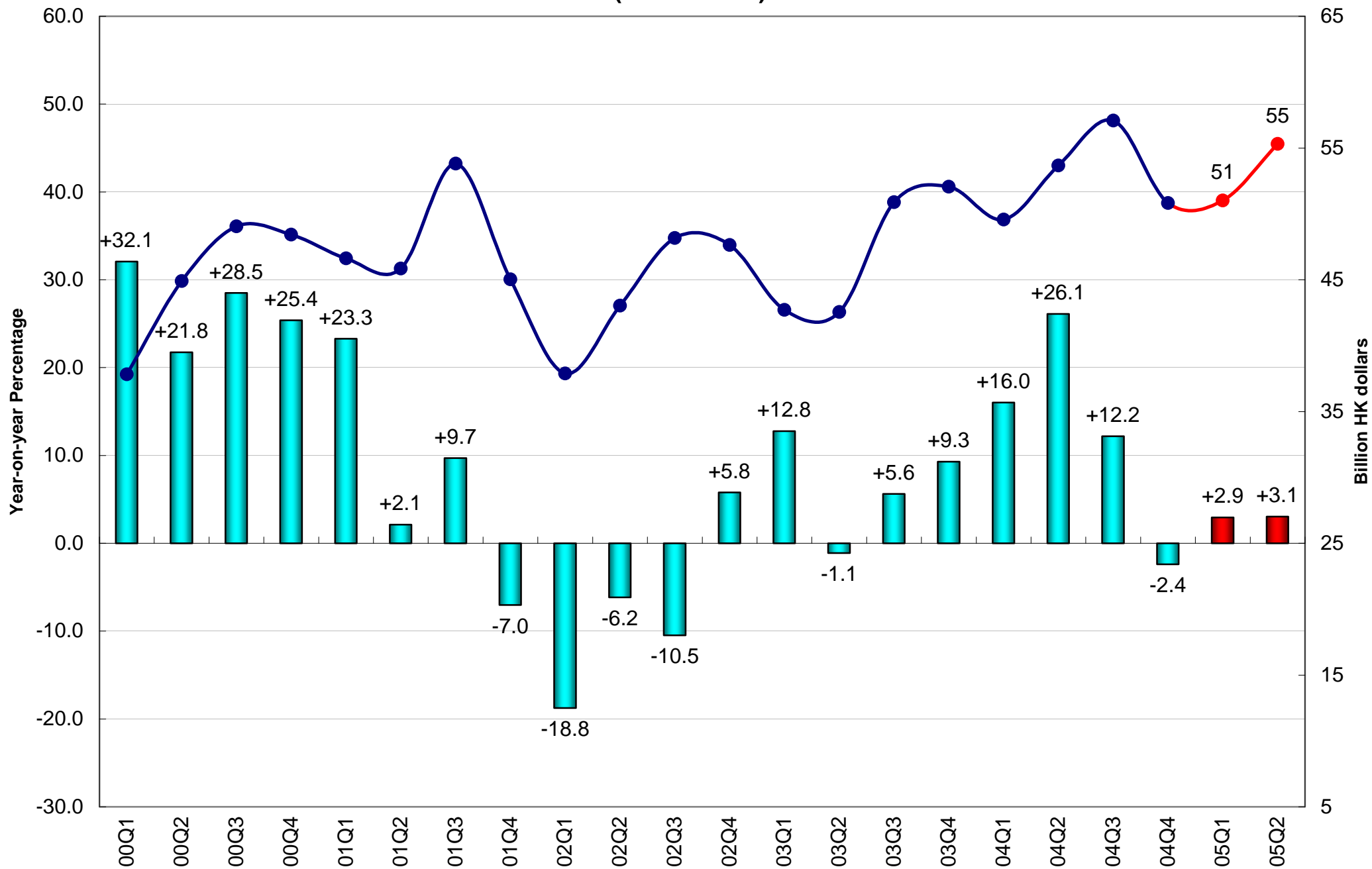
Gross Investment (2000 Prices)



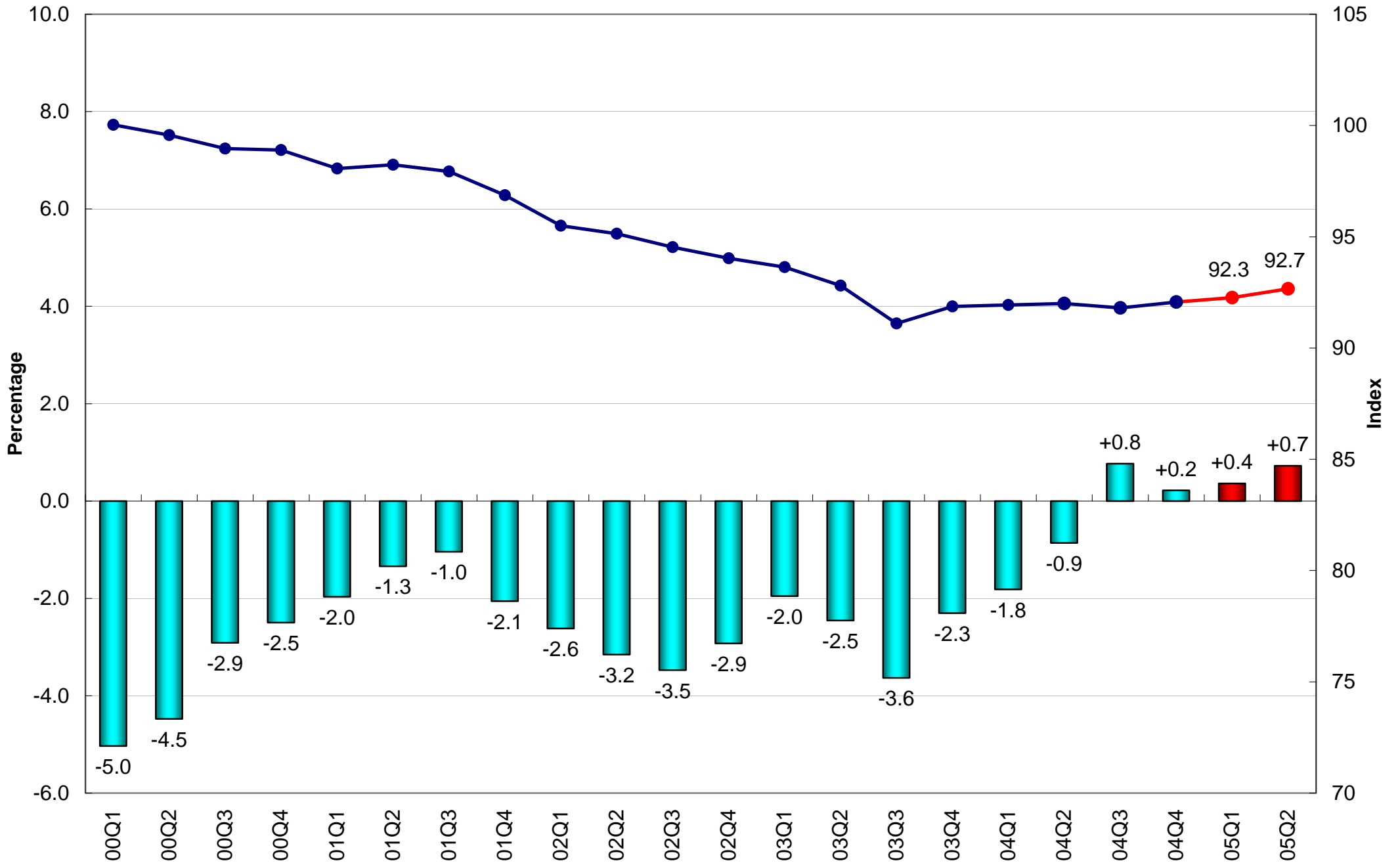
Investment in Land and Constuction (2000 Prices)



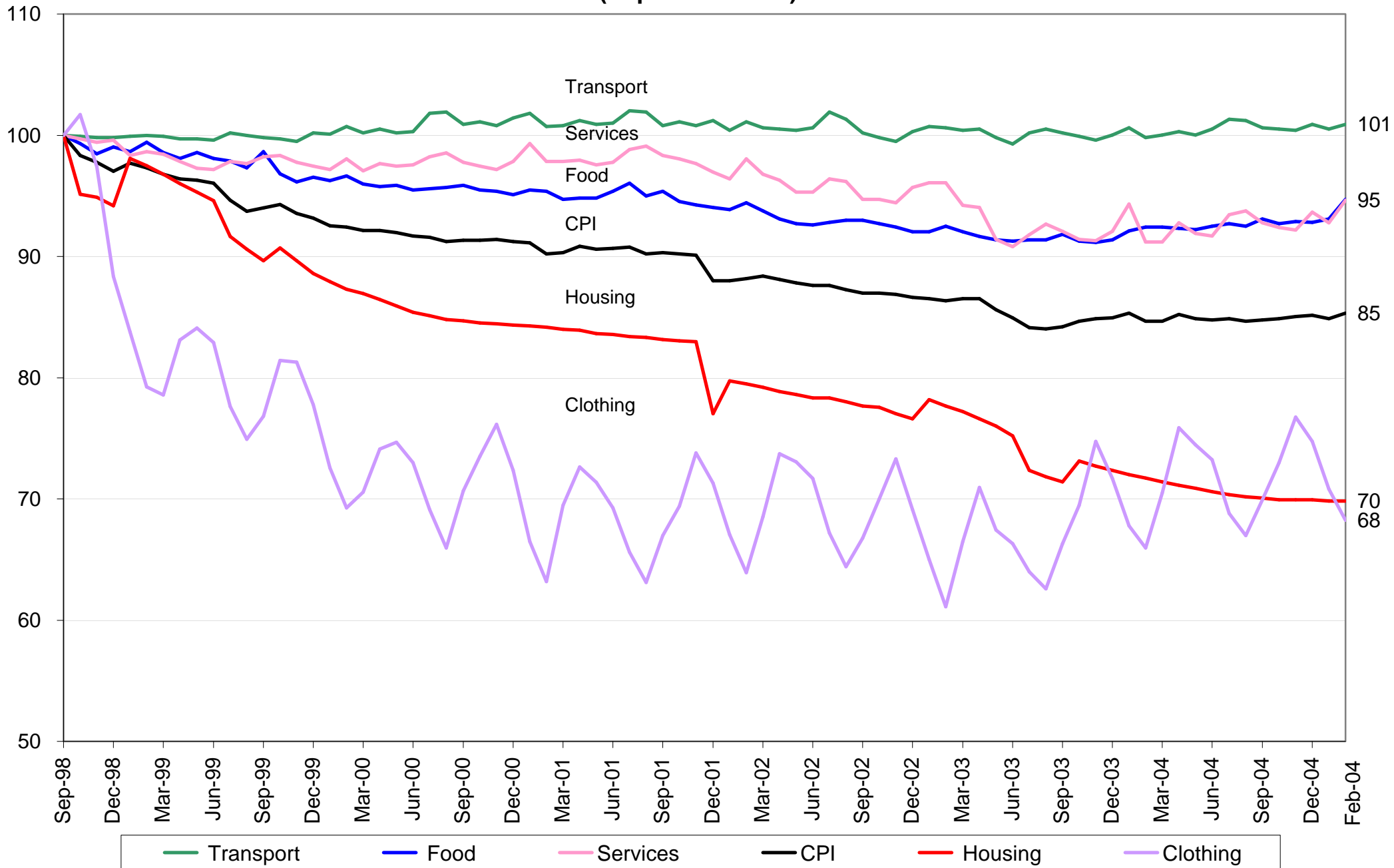
Investment in Machinery, Equipment & Computer Software (2000 Prices)



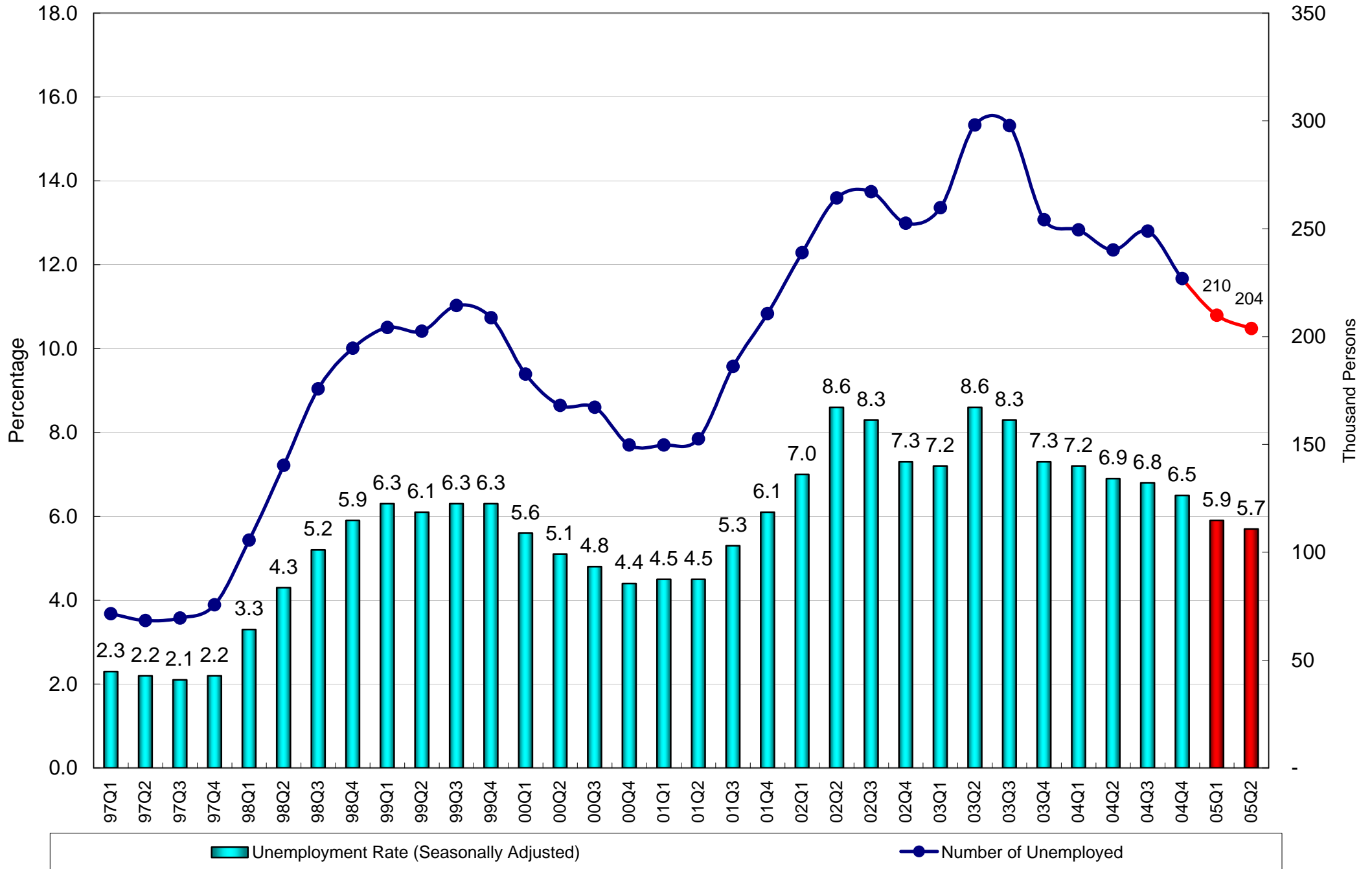
Consumer Price Index (10/99-09/00=100)



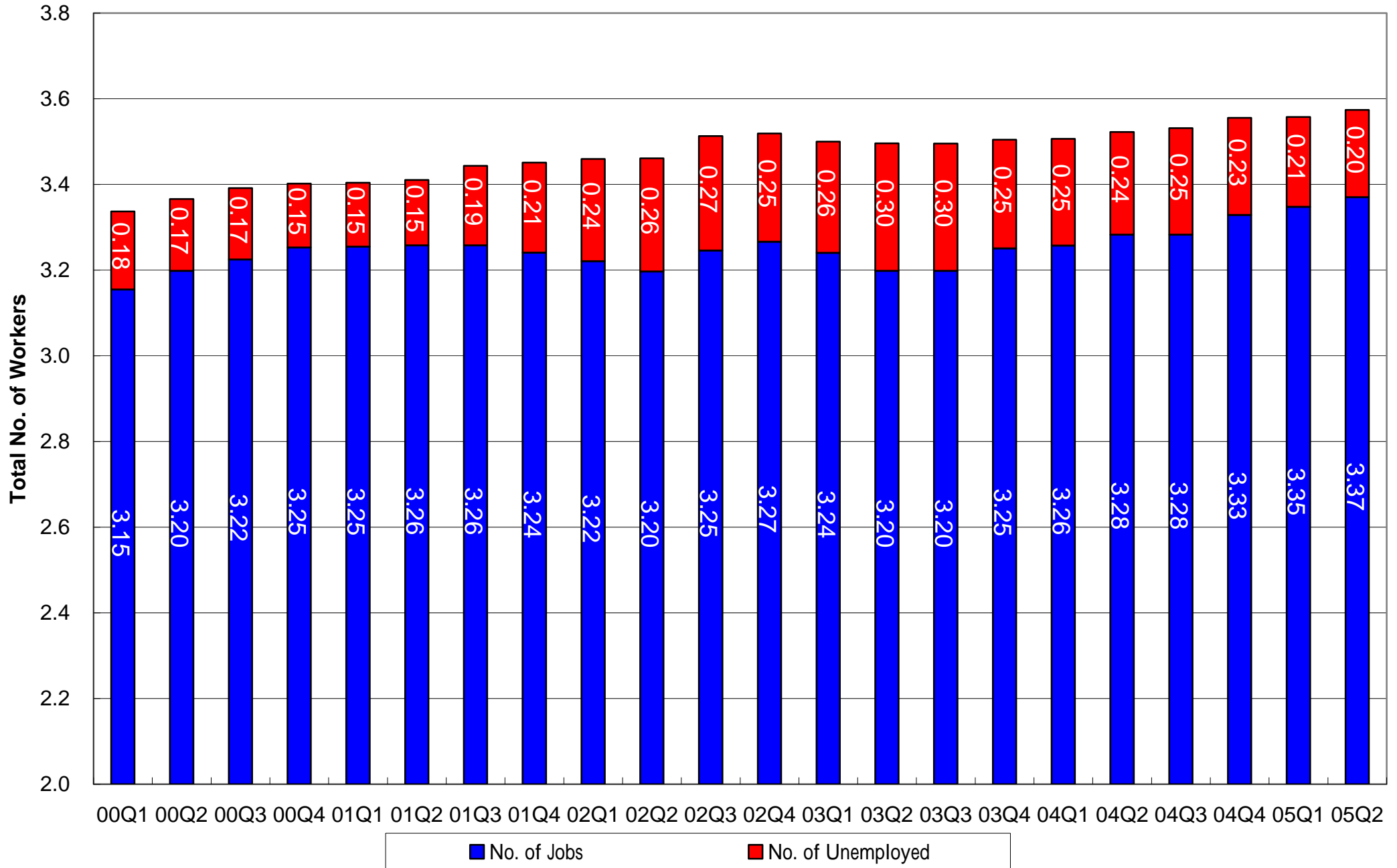
Composite Consumer Price Index (Sept 1998 = 100)



Unemployment



Workers Vs Jobs (in millions)



HIBOR vs. LIBOR

